

The Criterion

NORTHEAST CHAPTER-PROFESSIONAL CAR SOCIETY

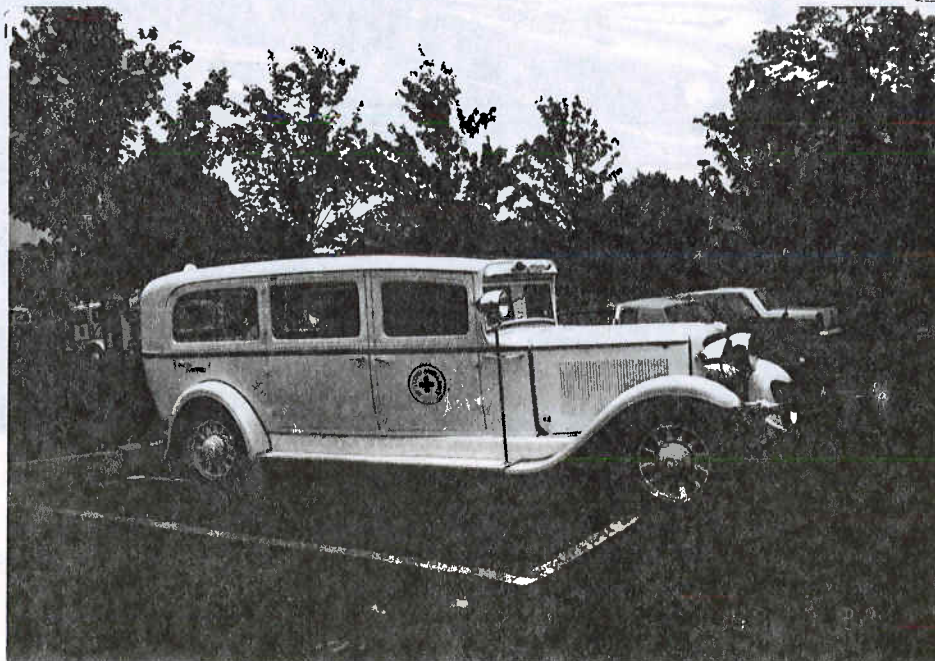
Issue No. 12

Fall, 1989

On a warm Saturday July morning, several of our members gathered in the burg of Wood-Ridge, at the Stewart's abode. This, however, was just a stop-off point, as the day's featured event took place in near-by Secaucus, in the parking area of Panasonic Corp. Here, eleven vintage ambulances joined their fire department counter-parts in one of the largest area displays of emergency vehicles seen in these parts. The occasion was the 37th annual convention of the International Fire Buff Assocaitees, known as I.F.B.A., who, like the PCS, holds its yearly meeting in a different part of the U.S.

After the morning coffee ritual in Wood-Ridge, the cars motorcaded to the site. It was quite a thrill to see all of these classics travelling along Route #3, soon joined by several pieces of area fire apparatus. Upon arrival, members were guided into a large, reserved parking area, where the vehicles were spaced out in every other spot, a thoughtful gesture in further protecting our doors against dents and scratches. Although there was no judging, our display drew lots of the curious amid our own Chapter barbeque, ably handled by chief cook Roseanne Stewart. The result was satisfying indeed--explaining our metal while content with a full belly!

Regardless, the day was simply delightful, with some of our newer members getting their first-chance outing with the group. And at the day's conclusion, some of the fire boys teamed up with our own mini-version of the PCS light show, to the fascination of the younger set.

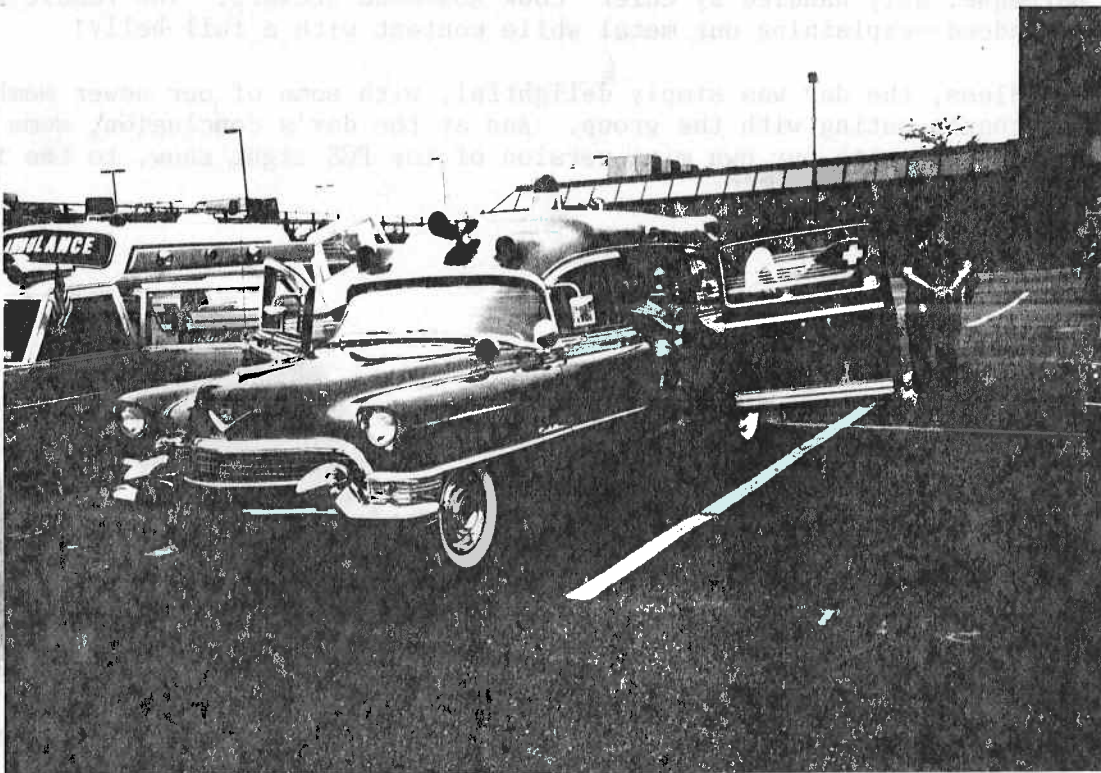


SHOW-STOPPER:

is BOB COSGROVE'S
1932 Miller Nash,
fully restored and
equipped with
period medical
supplies.



AMBULANCE ROW: Just visible is the JAST'S '55 Superior Rescuer, while the two ALFIERI cars, 1971 S&S and eye-catching 1959 Edsel Amblewagon. Beyond them is MYRON GITTELL'S '65 Superior Rescuer, and PAUL VICKERY'S 1956 Miller, driven by LEO MAREN.



Not visible in photo is the 'patient' on the JAST'S cot..the 'ol Pink Panther himself, who delighted the younger folks.



Some of the 'modern stuff' included Millington, NJ's restored 1974 M-M Criterion, finished in Georgia Silver over Seminole Red; FRED GOERLITZ'S 1976 Superior, and Kearny, NJ's down-sized 1978 Superior, driven by DAN McCANN.

Guest appearance by Bob Chais of Bergen County EMS Training Center's 1976 Superior, formerly owned by Elmwood Park, NJ. Car features a red band, offset with black striping, all on a white body.



Stay tuned for the Winter issue of The Criterion, when we'll feature our Fall picnic, held at BOB and KAROL COSGROVE'S.

ATTENTION PARADE FANS ! ! The Town of Harrison, NJ will be celebrating its 40th Annual Halloween parade on Tuesday evening October 31 at 6:00pm. Any member interested in participating with a professional car, is urged to contact Craig Stewart no later than October 5th.

1989 INTERNATIONAL MEET

The 13th Annual PCS International Meet is now history, and has left the Northeast Chapter with smiling faces. Several Chapter members were the recipients of awards at the annual banquet, held this year at the Holiday Inn, Gaithersburg, Md.

Walking off with Best of Show was BOB COSGROVE ' with his restored 1932 Miller Nash ambulance. He was also presented with the hotel employees choice, after a ballot by those staff members. Bob , in addition, received 1st Place, Standard Headroom ambulance.. and in the Riased Roff Ambulance catagory, not to be outdone were PHIL JAST and LANCE ALFIERI, taking 1st and 2nd Places, respectively, with a 1955 Superior Cadillac Rescuer and a 1971 S&S Medic Mark I. Lance also grabbed 3rd Place in the Standard Headroom ambulance with his 1959 Edsel Amblewagon conversion by ACC. In the Combination class, MAHLON THOMPSON was presented with 3rd place for his 1956 Meteor Cadillac. The Medic's Choice award, the favorite of ballots cast by members of the emergency medical services profession went to PHIL JAST.

Five Chapter members assisted in the vehicle show judging: LANCE ALFIERI, FRAN JAST, PHIL JAST, MIKE SATTERTHWAITTE, and CRAIG STEWART. Other Northeast members in attendance at the Meet included DAVE CSIMBOK, MYRON GITTELL, FRED GOERLITZ, RON MASSEY, DAN Mc CANN, the SATTERTHWAITES, the STEWARTS, the THOMPSONS, HARVEY SCOFIELD, and RICH and DIANE VALPSKY and daughter Caitlin.

Nice goin' one and all!!!

In other affairs at the business meeting dates and locations for the next few Meets were agreed upon: 1990--AUG 16-18, Atlanta, GA and hosted by the newly-chartered Peachtree Chapter; 1991--Marietta, OH; 1992-- Ozarks region, MO; 1993--Orlando, FL.

NEW HOPE SHOW

While we're at it with auto shows, three of our member's cars were present at the annual New Hope, PA Auto Show. This was held one week prior to the big International Meet and we're always glad to see our folks come through, in order that we might keep the professional car class. In the Limousine class it was HARV SCHOFIELD in 1st place with the 1967 L-P Lincoln and MIKE SATTERTHWAITTE taking 2nd. And it was BOB COSGROVE again with 1st with the Nash ambulance.

MORE NEW MEMBERS:

John C. Bauer
87 Charleson Rd
Brick, NJ 08724
201-899-8504

John F Fluehr, III
1117 Stump Rd
Feasterville, PA 19047
215-322-9372

1941 Cadillac 75 limousine
1949 Cadillac 75 limousine
1976 Superior Cadillac hearse

Ted J Hake
143 Payton RD
York, PA 17403
717-848-1333
1972 Superior Cad 54" amb

Jeff & Mary Hookway
201 Glenside Trail
Sparta, NJ 07871
201-729-8083

1967 S&S Cadillac Professional amb

OWNER'S PRIDE

Once again, we are pleased to offer highlights of another Chapter member's vehicles. From Cedarville, NJ way is PAUL PADGETT'S cars, both of which are featured on the following page.

The 1966 Superior Cadillac landau hearse was recently purchased from its original owner who bought it new. Paul has been working on it for the past 14 months. The car is a three-way, permitting it to be loaded from either curbside or from the rear. A funeral director by profession, Paul tells us that this car is still placed in service, further honoring a particular family's request for its use.

Superior Coach's funeral car offering in 1966 was available on both Pontiac and Cadillac chassis. Two series designations were Royale and Sovereign, the former with rear quarter windows, while the Sovereign featured no such window. Further, they were both offered in the Crown series, which featured a chrome band, tiara style, encircling the roof. Both landau and limousine packages were available. Paul's car, when new, sold for \$12,355 as a three-way landau. Superior's three-ways also included Lev-L-Matic for leveling the coach. Total 1966 Superior production was an even 1200 units: 30 were flower cars; 140 were side loaders, and 241 were end loaders. Combinations totaled 541, while 248 ambulances were turned out in both standard and high headroom configurations. And Cadillac Division manufactured 2463 units of its 156-inch wheelbase Commercial Chassis.

Turning now to Paul's Cadillac sedan, he advises that it took close to 16 months to bring this car to completion. Finished in Ebony, it is in excellent condition with the exception of a few door 'dings'. A repaint is scheduled in the near future.

Cadillac's styling changes for 1964 were modest and included a revised grille design and the famous tail fins receded even farther into the rear fenders. The V-8 engine displacement rose from 390 to 429 cubic inches, with a rating of 340 horsepower. Cadillac production and sales set a record for the third consecutive year: 165,959 vehicles were produced at Clark Avenue, 14,550 of which were the Fleetwood 60 sedan. (And for the record, Commercial Chassis production was 2639).

MARKETPLACE

- For Sale: 1966 Superior Cadillac landau hearse; black/black; 55K miles; purchased used two years ago; no air; \$1500/negotiable. CONTACT: Timothy Cooper, Cooper Funeral Home, 215 West Center St, Medina, NY 14103; Phone: 716-798-4131.
- For Sale: 1959 Superior Cadillac end loader hearse; 47K miles; no air; white w/ black crinkle roof (originally all black); gray/red velvet interior; Taken out of service in October, 1988; \$10,000 or B/O; CONTACT: Edward Van Dolson, Rt 1, Box 263, Lumberton, NC 28358; Telephone: 919-738-9733.
- For Sale: 1964 Superior Cadillac car; all original and complete; 55K miles; runs well; black, w/ leather interior. \$6500.and.....
- 1965 Superior Cadillac flower car; runs well; very nice condition; needs paint and some detailing; \$5500. CONTACT George Ruth, 17 Darling Dr, Wyomissing Hills, PA 19609; 215-678-4394.

PLEASE NOTE: If there is a yellow line underneath your address of the cover label, it means that this is the last issue of The Criterion that you will receive, as our membership records indicate that 1989-90 dues have not been submitted.

1966 Superior Sovereign on Cadillac chassis. Car is finished in Sable Black.



1964 Cadillac Fleetwood 60 Series sedan, one of four Fleetwood models offered by Cadillac that year.



Northeast Chapter

THE PROFESSIONAL CAR SOCIETY, INC.

PRESIDENT
CRITERION EDITOR

Craig Stewart
273 Hillcrest Avenue
Wood-Ridge, NJ 07075
(201) 438-1757

VICE-PRESIDENT

Philip Jast
1108 $\frac{1}{2}$ 17th Avenue
Wall, NJ 07719
(201) 280-1499

SECRETARY
TREASURER
MEMBERSHIP DIRECTOR

Frances Jast
1108 $\frac{1}{2}$ 17th Avenue
Wall, NJ 07719
(201) 280-1499

The Northeast Chapter of the Professional Car Society operates under a charter granted by the Society's Board on August 19, 1986. The Chapter serves PCS members in New Jersey, New York, and Pennsylvania. Subscription to this newsletter is by membership in the Chapter through the Membership Director listed above. Membership in the Professional Car Society, Incorporated, is a prerequisite to membership in any of its chapters.

The Criterion is published at 273 Hillcrest Avenue, Wood-Ridge, New Jersey 07075, on a nominal schedule.

Jeff Hookway
201 Glenside Trail
Sparta, NJ 07871

FIRST CLASS MAIL



NORTHEAST CHAPTER
PROFESSIONAL CAR SOCIETY
273 Hillcrest Avenue
Wood-Ridge, NJ 07075



A pristine example of the Kennedy-era 60's, is member PAUL PADGETT'S 1964 Cadillac Fleetwood 60 Series Sedan. There's more inside this issue on his car.