



The Criterion

Northeast Chapter - Professional Car Society

October, 1994

THE NORTHEAST CHAPTER SHINES AGAIN

At the annual Professional Car Society meet held in Pittsburgh, Pa. Northeast Chapter members came home with wonderful memories and many awards.

On Saturday evening the awards banquet was held with chapter members winning the following awards:

AMBULANCE - HIGH TOP	THIRD PLACE	Leo Maren, 1974 Miller-Meteor Cadillac
	THIRD PLACE	Craig Stewart, 1976 Miller-Meteor Cadillac
LIMOUSINE	SECOND PLACE	Bill Wright, 1969 Cadillac Fleetwood
FUNERAL COACH	FIRST PLACE	Mike Barruzza, 1973 S&S Victoria Cadillac
	SECOND PLACE	Ted Collins, 1967 S&S Victoria Cadillac
HARD LUCK AWARD		Pete Grave, 1975 Superior Cadillac Ambulance

The final award of the evening was the coveted BEST OF SHOW. This year our own Mahlon Thompson won this trophy with his beautiful 1938 Henny Packard Flower Car. CONGRATULATIONS MAHLON!!!

This years turnout of chapter members at the annual meet was one of the largest ever. In attendance were Mike Barruzza, Leo Maren, Craig & Roseanne Stewart, Jeff & Mary Hookway, Mahlon & Bonnie Thompson, Fred Goerlitz and his Dad, Bob Behr, Ted Collins, Bill & Lucille Marcy, Bill Wright and Pete & Jan Grave.

GET WELL SOON

On September 25th Craig Stewart suffered a heart attack. He is now recuperating at home with the help of nurse Roseanne Stewart. Craig is doing just fine.

A recent check of the current National Professional Car Society Roster indicates a few of our chapter members have not renewed their national membership. The organizations Constitution & By-Laws states you must join the Nation Professional Car Society to be eligible to belong to a local chapter. If your newsletter address label has a red X you must renew your national membership now or we will have to delete you from our membership roster. Enclosed is an application form for your convenience.

Please take note of the enclosed meeting notice as it is election time again.

At 10:00 A.M. on the day of the meeting some members will be meeting at the Greenbrook V.F.C.Flea Market. The fire companies address is 115 Greenbrook Road, Greenbrook, N.J.. If you would like to join us and are not sure where the fire company is located call Mike at 215-788-8015 or Leo at 908-647-3738

THE PROFESSIONAL CAR SOCIETY
NORTHEAST CHAPTER

ELECTION MEETING

DATE: November 6, 1994

TIME: 1:00 P.M.

PLACE: Long Hill First Aid Squad Building

Your attendance at this meeting is important!

Elections will be held for every office in the chapter:

President
Vice President
Treasurer
Secretary
Activities Director

Please bring your professional car.

For further information, contact:

Leo Marren - (908) 647-3738

Mike Barruzza - (215) 788-8105

DIRECTIONS

From Route 78:

Exit 36 (from 78 East left off ramp or from 78 West right off ramp). Continue on King George Road to first stop sign; turn right onto Valley Road. Go through three traffic lights; squad building is on the right immediately after Valley Mall Shopping Center.

From Route 287 South:

Exit 26A (North Maple Avenue/Basking Ridge). Go through first traffic light. Bear left at Y onto South Maple Avenue. Continue to blinking traffic light at top of hill; bear left, following the ridge of the hill, on Long Hill Road. At first stop sign, turn right onto Central Avenue. Go over tracks; it turns into Main Avenue. At first traffic light, turn left onto Valley Road. Go through two traffic lights; squad building is on the right, immediately after Valley Mall Shopping Center.

Long Hill First Aid Squad Building

(201) 647-2181

PARTS WANTED:

1966 Superior Cadillac Ambulance Gray Rubber Front Floor Mat, that was used in place of carpet #8776093 NOS or VG used.

Die-Cast Quarter panel script for 1966 Cadillac Ambulance or Hearse also needed.



Any help appreciated. Mike Barruzza 700 Beaver Street, Bristol, Pa. 19007-3823 (215) 788-8105 or Fax (215) 788-1931.

CAR CLUB SPECIAL SUBSCRIPTION OFFER



YES! Start my 1-year (52 issue) subscription to **OLD CARS WEEKLY** for only \$24.95, a \$5.00 savings off the regular price!

YES! Start my 1-year (6 issue) subscription to **OLD CARS PRICE GUIDE** for only \$13.95, a \$3.00 savings off the regular price!

Your Name _____
Address _____
City _____
State _____ Zip _____

Club Name _____
City _____ State _____

- Check or money-order (payable to: KRAUSE PUBLICATIONS)
- MasterCard VISA

Credit Card No. _____

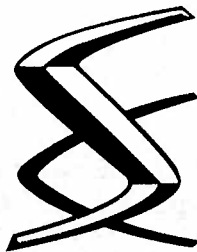
Expires: Mo. _____ Yr. _____

Signature _____

Return this form with payment or charge to:
OLD CARS DIVISION
Circulation Dept.
700 E. State St., Iola, WI 54990-0001

MasterCard & VISA Cardholders
save time by calling toll-free
800-258-0929
Dept. ABAHXX
Mon. - Fri. 6:30 a.m. to 8:00 p.m., Sat. 8:00 a.m. to 2:00 p.m., CST.

Introducing the most impressive professional car book ever produced.....

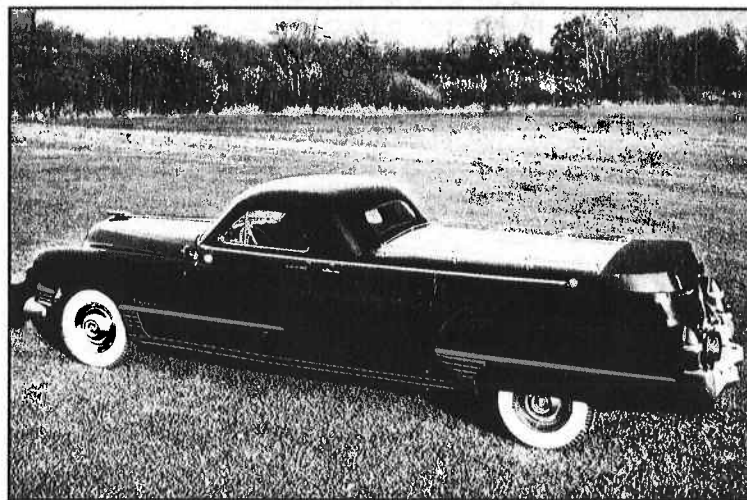


SUPERIOR
 THE COMPLETE HISTORY
 by
 THOMAS A. McPHERSON



Look at What's Included

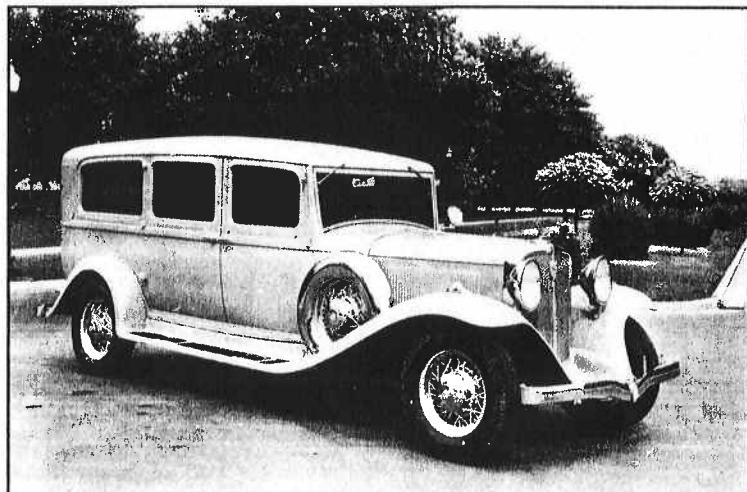
- Compiled and written by T.A. McPherson, a recognized professional car authority and author of *American Funeral Cars And Ambulances Since 1900*, *Flexible Professional Cars: The Complete History* and *The Eureka Company: A Complete History*.
- Foreword by Walter M.P. McCall, a respected automotive writer, author and editor of the *Professional Car*.
- Introductions written by former Superior President Darrel Metzger and current President Donald Cuzocrea.
- The only complete history ever published on Superior, the company and its products, from establishment in 1923 through 1994. All professional car developments and models are detailed or illustrated along with examples of Superior's buses, motorhomes, limousines, custom-built cars and military vehicles.
- The latest and largest book in the continuing series of SVP professional vehicle company histories.
- Contains over 900 rare factory photographs including detail, beauty, interior, exterior, styling, prototype and close-up photos of models from 1923 through 1994.
- Complete verified production figures from 1948 through 1994 along with complete model listings and pricing of most professional vehicles since 1926.
- Crisp, beautiful factory photographs and illustrations, most never before seen, depict Superior bodies on Buicks, Cadillac, Chevrolet, Chrysler, Dodge, Ford, Lincoln, Packard, Pierce-Arrow, Pontiac and Studebaker all set out in chronological order.
- Promoting The Product Chapter features reproduced Superior professional car advertising.
- Limited press run of 1500 books, the first 150 copies being numbered and autographed, assures status as a collectors piece.
- Large 9x11 format bound in a dark grey cover with silver stamping.
- The complete, Superior corporate and product history presented in minute detail. A must have for all true professional vehicle buffs. The definitive Superior history.



Approx.
400
pages

OVER
900
FACTORY
PHOTOS

Limited
Edition



RETAIL PRICE \$69.00
 ORDER NOW AND RECEIVE 20% OFF!
Your Price \$55.20 ea.
 SPECIALTY VEHICLE PRESS



• 49-6A THE DONWAY WEST • SUITE 1916, DON MILLS • ONTARIO • CANADA • M3C 2E8

YES, SEND _____ COPIES OF SUPERIOR: THE COMPLETE HISTORY.

MY CHECK OR MONEY ORDER FOR \$ _____ IS ENCLOSED.

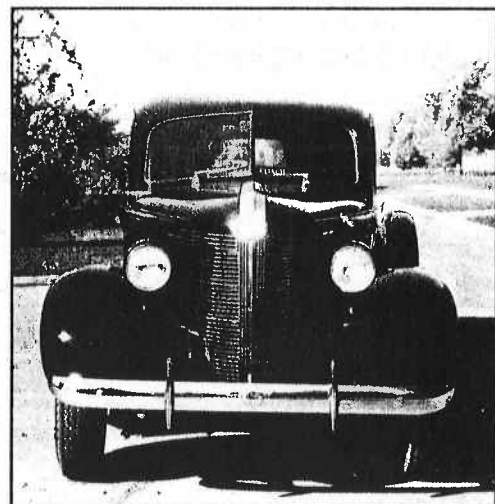
NAME: _____

ADDRESS: _____

CITY: _____ STATE/PROV.: _____

POSTAL CODE: _____

SORRY ; VISA, MASTERCARD, ETC. NOT ACCEPTED • CANADIAN RESIDENTS MUST ADD 7% GST.
 PLEASE ALLOW 8 TO 10 WEEKS FOR DELIVERY





**NORTHEAST CHAPTER - PROFESSIONAL CAR SOCIETY
MEMBERSHIP APPLICATION**

Name: _____ Date: _____

Address: _____

City: _____ State: _____ Zip: _____

Telephone number with Area Code: () _____

PROFESSIONAL VEHICLES OWNED: (To list additional cars, use a separate piece of paper)

	Car 1	Car 2
Year of Manufacture:	_____	_____
Coachbuilder:	_____	_____
(e.g. Superior)		
Chassis Make:	_____	_____
(e.g. Cadillac)		
Coachbuilder Model Name:	_____	_____
(e.g. Crown Royale)		
Vehicle Type:	_____	_____
(e.g. limousine-style combination hearse/ambulance)		
Unique Features:	_____	_____

IMPORTANT NOTES: Ownership of a Professional Car is **not** required for membership, however membership in the **PROFESSIONAL CAR SOCIETY** is a prerequisite for membership in the *Northeast Chapter* of the Professional Car Society. You may photocopy, complete and submit this application for membership to the Professional Car Society and/or Northeast Chapter.

PROFESSIONAL CAR SOCIETY

Dues: \$20.00 per year in U.S. currency
outside N. America, add \$2.00
Checks payable to: Professional Car Society
Mail check & application to:
Professional Car Society
P.O.Box 09636
Columbus, OH 43209-9636

Membership includes all quarterly issues of *The Professional Car* for the calendar year of membership, regardless of date. Membership dues are due & payable in January of each year.

NORTHEAST CHAPTER

\$10.00 per year in U.S. currency
Northeast Chapter - PCS
Leo Maren III
369 Chestnut St.
Stirling, NJ 07980

Membership includes all quarterly issues of *The Criterion* for the calendar year of membership, regardless of date. Due in January.



The Professional Car Society, Inc.

AN INVITATION FROM THE NORTHEAST CHAPTER

The Northeast Chapter of The Professional Car Society invites your membership in a growing worldwide organization dedicated to the maintenance, restoration, preservation, appreciation and display of one of the finest examples of automotive craftsmanship: the professional car.

A professional car is loosely defined as a custom-bodied vehicle, based on passenger car styling, and used in the funeral, rescue, or livery services. Such vehicles may be hearses, flower cars, service cars, ambulances, limousines, or cars which are specially built to combine two or more of these different functions, such as combination hearse-ambulances, sedan-ambulances or invalid coaches.

The society was founded in 1976 to encourage the preservation of such vehicles, many of which at the time had no established classes in multi-marque antique-car organizations. The Society's growth since that time has helped to establish the position of the professional car in more and more clubs and shows, and has served to preserve many of these vehicles for future collectors to restore and enjoy.

In the furtherance of our objectives, we publish a quarterly magazine, *The Professional Car*. This magazine contains industry news, historical articles, club news, advertisements of interest to the collector, miscellaneous features and lots of photographs. Regular features include *Owners Pride*, a success story of one member's professional car; *The Limo Page*, highlighting some aspect of the livery-car past and present; *The Marketplace*, containing classified advertising from all over. All ads are published free for members. We publish a biennial directory of Society members, their addresses and a listing of their professional cars. This directory is not sold at extra cost but is included with the membership.

The Northeast Chapter publishes its own quarterly newsletter, *The Criterion*, emphasizing regional members' cars and Chapter activities such as car shows. The Northeast Chapter accepts members from any location, and although ownership of a professional car is not required, membership in The Professional Car Society is.

In addition to our publications, we hold an international meet every summer. This event, always well attended, draws diverse vehicles from many locations to make one of the most unusual car shows in the hobby. The site of the international meet is frequently chosen to include a visit to the plant of one of the firms in the professional car industry, or some other location of significance to the history of these cars, such as a former factory. We have members in countries all over the world and are establishing chapters in numerous locations, wherever enough Society members indicate an interest in having such a local organization.

Membership in PCS is on a family basis: dues include both husband and wife where applicable and desired. Sustaining memberships are available for those who wish to contribute a little more to the society, at a rate twice that of active membership. Manufacturers, dealers, and others in the professional-car industry are encouraged to become sustaining members, provide news for our journal, and display current products at our events.

We look forward to your acceptance of this invitation, and we know that you will find society membership worthwhile and enjoyable.



The Professional Car Society, Inc.

Northeast Chapter

President

Criterion Editor
Michael A. Barruzza
700 Beaver Street
Bristol, PA 19007
(215) 788-8105
(215) 788-1931 (Fax)

Vice President

Fred Goerlitz
2 Brantwood Terrace
Hackettstown, NJ 07840
(908) 852-1743

Secretary

Mary Hookway
201 Glenside Trail
Sparta, NJ 07871
(201) 729-8083

Treasurer

Membership Chairman

Leo M. Maren III
369 Chestnut Street
Surling, NJ 07980
(908) 647-3738

Activities Director

Craig Stewart
273 Hillcrest Ave
Wood-Ridge, NJ 07075
(201) 438-1757

The Northeast Chapter of the Professional Car Society operates under a charter granted by the Society's Board on August 19, 1986. The Chapter serves PCS members in New Jersey, New York, and Pennsylvania. Subscription to this newsletter is by membership in the Chapter through the Membership Director listed above. Membership in the Professional Car Society, Incorporated, is a prerequisite to membership in any of its chapters.

The above ad was taken from the Italian Yellow Pages for the U.S.A. It appears to be a newer model MERCEDES-BENZ.

ITALY **2**
 THE ONLY FIRM ACCREDITED TO SERVE
 ITALIAN MILITARY FORCES
 PREFERRED BY THE MOST IMPORTANT EMBASSIES
 ROMA tel. **39-6-46-96**
 BUREL AND CHEMATIONS EMBALMING 24-HOUR SERVICE
 TELEX 625.625 OVERSEAS - FAX (0) 4871922
 ROME - VIA CAVOUR, 312 - VIA ROMAGNA, 32

The Professional Car Society
 Northeast Chapter
 c/o 700 Beaver St.
 Bristol, PA 19007-3823



FIRST CLASS

Jeff & Mary Hookway
 201 Glenside Tr.
 Sparta NJ 07871

