

The Criterion

NORTHEAST CHAPTER-PROFESSIONAL CAR SOCIETY

Issue No. 10

Spring, 1989

PLAN NOW FOR YORKTOWN HEIGHTS

Another spectacular auto show is in the making, this one planned for the week-end of May 12 to 14! Through the efforts of Chapter member TONY CUTRONE, the first annual Yorktown Heights Auto Auction and Flea Market marks the first time in years that a car show of this kind is planned here in our New York metro area. The show site will be on the grounds of the local Grange, which contains all the necessities: ample parking, electricity, restrooms, water, food, and security. Yorktown is nestled in the suburbs of Westchester County, New York, just 25 to 90 minutes from our area, depending on location.

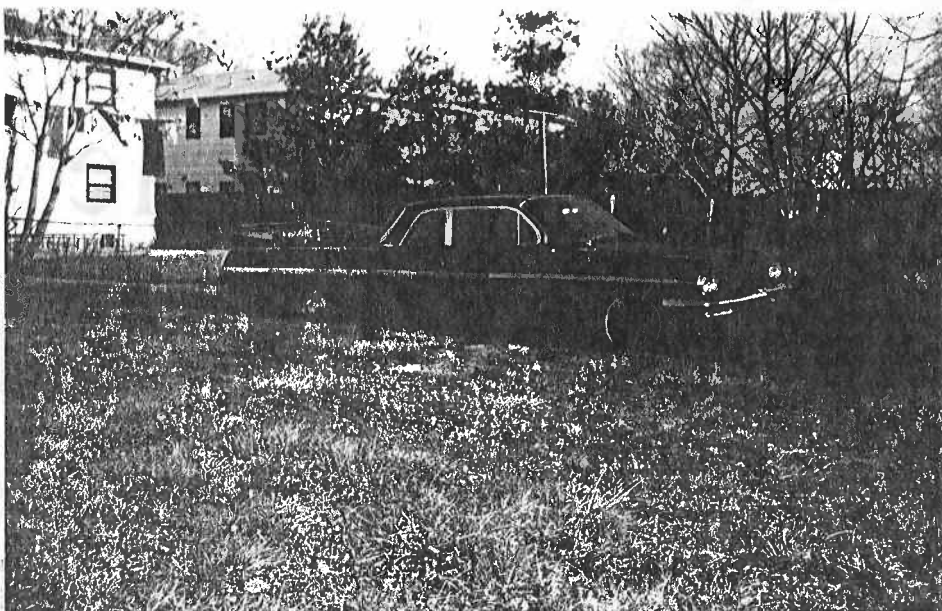
A nostalgia-type auction is planned for Friday, May 12. This will include old juke boxes, toys, and carousel animals among the most popular items. The next two days, however, are reserved strictly for car sales. And to insure the comfort of all, the auctions will be held under a large show tent, so weather should not dampen enthusiasm. For those who wish to sell there will be a flat \$100-per-car entry fee with NO commission.. (merely \$50 per car sold from the buyer and seller). A further bonus is offered..to celebrate Mother's Day on Sunday, May 14, there will be a free drawing of a \$5000 Mink coat. The winner will be chosen at 12 noon and only mothers are eligible and must be present at time of drawing.

Now for our professional car kinds, Tony advises that there will be a special corral set up, which will include a 1st, 2nd, and 3rd place People's Choice Award for our class! Afterwards, a buffet will be provided for those of us in our group. This phase of activity will take place on SUNDAY, MAY 14, COMMENCING AT 9:00 AM. If you are planning to attend with your professional car (s), please arrive early and be ready to show by the 9:00 am hour! Our only requirement is that you PLEASE, PLEASE, call Tony and let him know the number of people and cars in your party. We request you advise him NO LATER THAN APRIL 30. Tony may be reached at his Andover, NJ home at 201-347-2028.

We, of course, hope to make this first Chapter activity of the 1989 season a successful one. And we have lots of new members that we would like to meet and talk with, so let's make an effort to have a strong showing on May 14. You will find a map with directions to Yorktown elsewhere in this issue. See ya there!!

IT'S GOOD TO BE THE KING!

Pictured is DAVE CSIMBOK'S latest purchase..it's a 1962 Pontiac Catalina flower car. The only one of its kind, it was literally hand-crafted by none other than Armbruster-Stageway of Fort Smith, ARK.



Dave has seen this car, sitting neglected for about the last 5 years on a Carteret, NJ gas station. He of course got first dibs at it when it was offered for sale, and at the present time, the coach is mechanically sound, with a stock 389 cid engine, boasting something like 267 horsepower. Then there's power steering and brakes and a Turbo-Hydrumatic trans. Pontiac sales that year totaled 521,933 cars, with 204,654 of the Catalina variety, placing them at third place in the industry! And for this particular conversion, it was number 1 of a grand total of one! Dave's research led him to a lengthy conversation with the Armbruster employee, Bill Eckelhoff, who hand-built the car in a corner of the plant. Armbruster, better known for its stretch limousines and huge airport limos, decided to construct this car and place it on the market. Showed at numerous trade exhibitions with a projected price of \$4000 (remember, this is 1962, when industry giant Superior only built 34 flower cars on the Cadillac Commercial frame for \$10785 each; they also made only 239 Pontiac professional cars back then). But this car was not well received, and placed into storage for a while, before finally finding a home in Bayonne, NJ with a local funeral director.

This flower car, with lead-filled seams, took approximately 18 months to build, using the stock frame. The car was stretched and used a one-piece driveshaft, with the Pontiac roof blending in quite nicely with the over-all lines. Suicide doors were added as was a stainless steel flower bed. Finished in black paint, it took close to \$10,000 to build. Dave is presently waiting for a letter from the firm to document the authenticity of this 1 o n g car. The car is all original, right down to its four Catalina wheelcovers (even though we see one omitted in the photo). This is a definite contender in the Flower Car class at the up-coming International Meet in Gaithersburg, Maryland in August (15 to 19)! Dave promises to keep us posted on his progress.

MARKETPLACE

For Sale: Rare 1967 Trinity Buick Royale limousine-style combination; Body #67021, black painted roof, gray body; 2 folding attendant seats; 2 storage compartments and rear floor compartment; casket rack, rear heater, red leatherette interior; 65K original miles; Car is clean and mechanically sound, w/ good glass, chrome, rubber. This Maine car is believed to be one-of-a-kind, built by Trinity Coach in Duncanville, TX. For info, contact: Terry O'Neill, Specialty Hearse & Ambulance, 24000 Northern Blvd, Roslyn, NY 11576; phone 516-621-7700.

For Sale: 1964 Miller-Meteor 48-inch headroom ambulance on Cadillac chassis; 35K miles, white over red, double stretcher model; no siren, but has all lights; some surface rust; Price: \$650. CONTACT: Phil Jast, 201-280-1499.

MARKETPLACE, cont'd

For Sale: 1971 S&S Cadillac high headroom ambulance; all original, incl lights, 2-way radios, fully stocked; \$2800.
 1969 Superior Cadillac landau hearse; 42K miles; air; excellent cond; all original, always garaged; \$2200.
 1964 Superior Cadillac limousine hearse; 19K miles; like new; \$2800.
 1966 Cadillac flower car; CONTACT: George Ruth, 215-678-4394 (PA).

For Sale Or Swap: 1975 Superior Cadillac high headroom ambulance; white over red; front bucket seats; fire dept owned, am 2nd owner; \$2000 or trade for low top ambulance or Superior Pontiac short wheelbase Consort amb or comb; Also have leads on 1977 Superior Cad amb, and 1966 S&S Kensington Cad amb; CONTACT: C Marshall Long, 716-836-4024.

WELCOME NEW MEMBERS We're never satisfied, keep 'em coming!

JAMES AIKEN
 158 Berthold Av
 Rahway, NJ 07065

MARC FOXX
 12-B Troy Dr
 Springfield, NJ 07081
 201-376-2803

GARY/LANEY MENKIN
 232 Kingsberry Dr
 Somerset, NJ 08873
 201-846-8179

ROBERT COSGROVE
 43 Brook St
 Islip, NY 11751
 516-277-1299
 1932 Miller Nash am
 1938 Miller Cad amb

STEVE/SUZANNE COOPER
 104 Johnson Av
 Bloomfield, NJ 07003
 201-338-9437
 1965 Black Chev Carryall amb

LANCE ALFIERI
 9 Audley Circle
 Plainview, NY 11803
 516-681-0331
 1959 Amblewagon Edsel amb

W
 E A
 L B
 C O
 O A
 M R
 E D
 ! !

BILL/DOROTHY MARANICK
 1130 W 8th St
 Plainfield, NJ 07063
 201-561-4995
 1966 Superior Pontiac hearse

RICHARD/DIANE VALESKY
 3138 Maple Rd
 Huntingdon Valley, PA 19006
 215-938-1066
 1969 M-M Cadillac hearse
 1969 Superior Cad ambulance

FROM Canadian PCS member Kent Roduck, is this 1982 Superior Coupe de Fleur, owned by Swanson F.H. in Detroit, MI. Roof beacon is amber, an identification feature frequently seen on Midwest funeral cars. Also note large chrome nameplates on door. Car is finished in Sable Black.



FINANCIAL REPORT:

Treasurer FRAN JAST presents the 1988 Chapter financial summary: Total income: \$357.79, majority of which is from membership dues; \$525.19 spent on activities (picnic and t-shirt sales); \$19.50 for publication; leaving balance on hand at year's end of \$597.44.

CALENDAR

April 28, 29, 30 Englishtown, NJ: Spring Auto Show/Meet/Flea Market.

Sat, May 13: West Paterson, NJ: 75th Anniversary parade 1pm.

Sat, June 3: Jefferson, NJ: Antique Fire Assn of NJ 8th Annual Muster/Flea Market, Fireman's Field, Route 15; 9am to 5pm.

Sat, June 10: Butler, NJ: Tri-Boro 1st Aid 50th Anniv parade, 1pm.

Sat, June 17: Dover, NJ: Fire Dept 115th Anniv parade, 1:30pm.

Sat, July 22: Secaucus, NJ: Int'l Fire Buff Assn Convention-antique fire apparatus display 10am to 3 pm at Panasonic Corp, opp Meadowlands Hilton hotel.

HERE 'N THERE

- + There is no doubt that our Chapter is rapidly growing. So we've decided to list our membership roster in booklet form, rather than in the usual listing as done in the past. All we request is that you keep us informed of any changes.
- + SICK BAY--get well wishes are extended to MARC FOXX, who is recuperating from an accident last winter; and to PHIL JAST, who is on the mend from back surgery.
- + PAUL VICKERY'S 1940 Flexible Buick ambulance was recently displayed during a week-long anniversary celebration at Norristown, PA's hospital. Also look for this car in an upcoming issue of THE BUICK BUGLE, the publication of the Buick Club of America, which is featuring Paul's car.
- + In the January, 1989 issue of JEMS magazine is a photo of MYRON GITTELL with his 1965 Superior Cadillac "Rescuer" ambulance, complete with personalized NY license plate "LOADNGO". The car formerly saw service in Montandale, NY until late 1987.
- + KEN POZAROWSKI on the prowl for a 1961 or '62 Oldsmobile ambulance. If anyone out there in ambulance-land can help, he would appreciate a call at 717-992-5199.
- + The April, 1989 issue of SPECIAL INTEREST AUTOS has a nice piece on an unusual 1970 Lincoln Continental Mark III sedan, custom-built by Lehmann-Peterson of Chicago. It was, of course, the only 4-door built on this 2-door based car.
- + Compiling a three-part installment on the history of the limousine ambulance in New Jersey is CRAIG STEWART. The article will debut in the March issue of GOLD CROSS magazine, the publication of the NJ State First Aid Council.
- + Canada's Eureka Coach was recently purchased by Heritage Coach of PA, and has set-up operations in Norwalk, OH. They cut their first car there on February 27. The city of Norwalk was once the site of Superior Coach's parts storage depot.
- + A couple of articles on Presidential limousines appear in the March 9th edition of OLD CARS WEEKLY. The first one highlights President Bush's 1989 Lincoln Town Car custom stretch limousine, which made its debut on Inauguration Day in January. This car, unlike its predecessors, was constructed entirely by Ford Motor Co, rather than by a custom coach firm. The same issue also features a concise history of Presidential limousines utilized by 20th century presidents.

Directions to Yorktown Fairgrounds

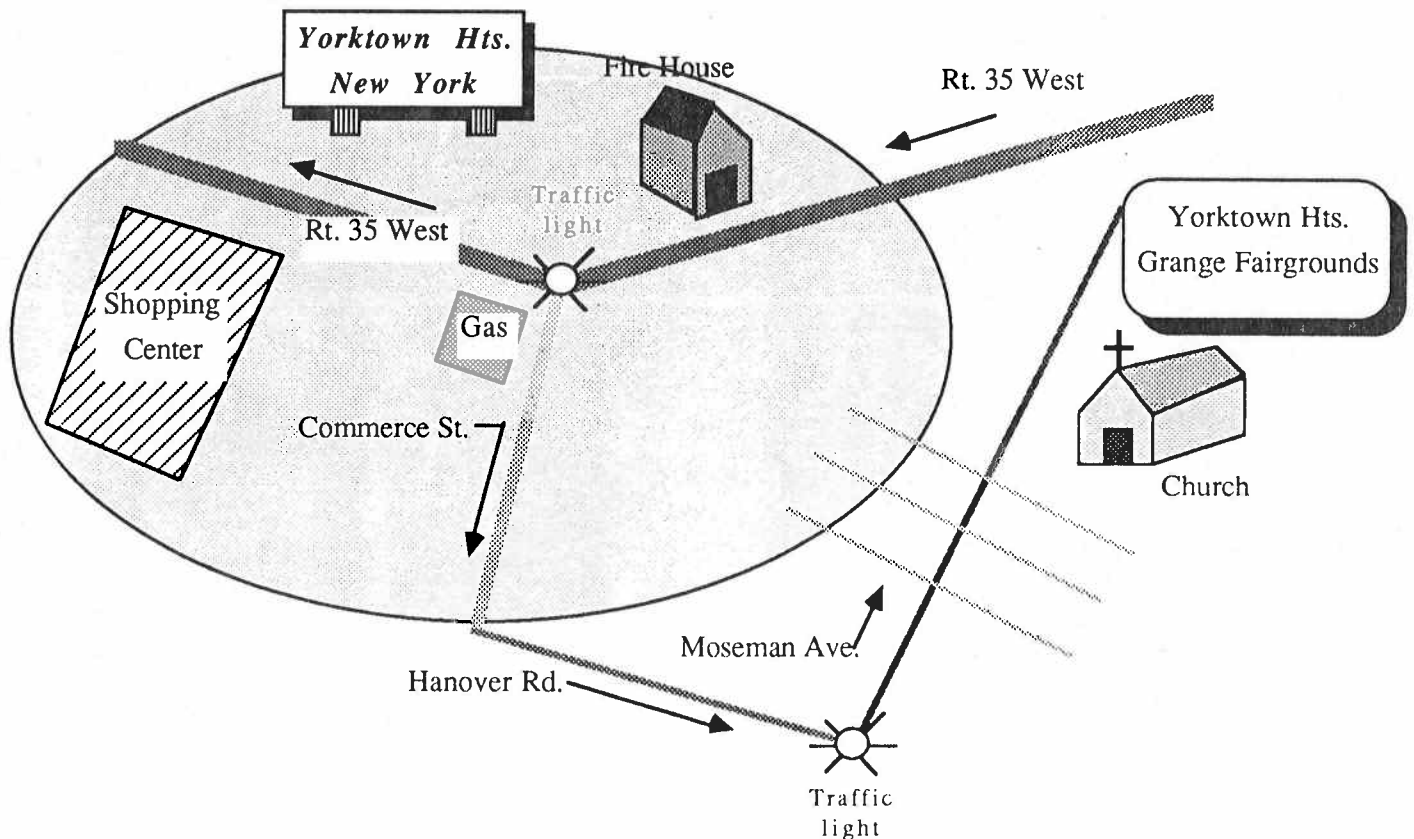
From N.J. : Garden State Pkwy. North to Tappenzee Br. Over bridge to exit 8 to 287 White Plains. Go to 684 to exit 5. Take 35W to Yorktown Hts. Center of town, left onto Commerce St. to Firehouse, bear left to Hanover Rd. to Stoplight. Left onto Moseman Ave. go 3 1/2 blocks, Fairgrounds are on the right.

From Conn. Take Rt. 84 out of Danbury Conn. to RT. 684 to exit 5. Take 35W to Yorktown Hts. to center of town., left onto Commerce St. to Firehouse, bear left to Hanover Rd. to Stoplight. Left onto Moseman Ave. go 3 1/2 blocks, Fairgrounds are on the right.

From Pa. 80 East to Garden State Parkway North to Tappenzee Bridge. Follow directions from N.J.

From L.I., Taconic Parkway North to Yorktown Exit. Right onto Underhill to light. Bklyn, NYC, Make left to second light. Right onto Commerce St. and follow directions from N.J.

All roads lead to the Yorktown Grange Fairgrounds



Northeast Chapter

THE PROFESSIONAL CAR SOCIETY, / INC.

PRESIDENT
CRITERION EDITOR

Craig Stewart
273 Hillcrest Avenue
Wood-Ridge, NJ 07075
(201) 438-1757

VICE-PRESIDENT

Philip Jast
1108 $\frac{1}{2}$ 17th Avenue
Wall, NJ 07719
(201) 280-1499

SECRETARY
TREASURER
MEMBERSHIP DIRECTOR

Frances Jast
1108 $\frac{1}{2}$ 17th Avenue
Wall, NJ 07719
(201) 280-1499

The Northeast Chapter of the Professional Car Society operates under a charter granted by the Society's Board on August 19, 1986. The Chapter serves PCS members in New Jersey, New York, and Pennsylvania. Subscription to this newsletter is by membership in the Chapter through the Membership Director listed above. Membership in the Professional Car Society, Incorporated, is a prerequisite to membership in any of its chapters.

The Criterion is published at 273 Hillcrest Avenue, Wood-Ridge, New Jersey 07075, on a nominal schedule.

Northeast Chapter

THE PROFESSIONAL CAR SOCIETY, INC.

FIRST CLASS MAIL

Craig Stewart
273 Hillcrest Avenue
Wood-Ridge, NJ 07075
(201) 438-1757

CRITERION EDITOR
PRESIDENT

Philip East
1108 17th Avenue
Wall, NJ 07719
(201) 280-2409

VICE-PRESIDENT
Wood-Ridge, NJ 07075
273 Hillcrest Avenue
PROFESSIONAL CAR SOCIETY
NORTHEAST CHAPTER

Frances East
1108 17th Avenue
Wall, NJ 07719
(201) 280-2409

SECRETARY
TREASURER
SHIP DIRECTOR



You Gotta Be Kiddin'...take a really close look at the body work on that hearse, folks! Yep, it's a 1966 Miller-Meteor, with 1977 Cadillac sheet metal. The car is owned by Transcona Funeral Home, Transcona, Manitoba and they did the work themselves. Pretty slick, those Canadians!

Photo by Ken Roduck.