



The

Criterion

Northeast Chapter - Professional Car Society

APRIL, 1994

SPRING HAS SPRUNG...FINALLY!

Hopefully, the warm weather has finally arrived in these parts. After what has been the wettest winter remembered around here in a long while, we can finally get those Professional Cars out and running again. But before long, it might be good to perform that safety check on your car. After sitting for that long winter, all mechanical systems should be thoroughly checked. And make certain that a 2.5-pound fire extinguisher is among the equipment, both for safety and now PCS requires that as a minimum in each show vehicle.

ELECTIONS, 1994

At the last Chapter meeting on November 8, 1993, the 1994 officers were elected. The entire present slate was returned to office. Their names are listed on the Masthead.

JOAN LICHTMAN

It is with regret that we report the death of Mid Atlantic member Joan Lichtman of Silver Spring, Maryland. She suffered a heart attack in November. She leaves a husband, Eugene and son Steven. She will be missed by those who knew her.

SHOWTIME

Enclosed with this issue is a flyer for a Northeast Chapter event. The date is Sunday, June 5th at Msgr. Owens Park on Park Avenue in Nutley, N.J.. The event is the 14th Annual Show and Swap Meet sponsored by the North Jersey Mustang Club. This congenial group has even consented to provide a Professional Car Class, providing that we fill it! Therefore, we need 8 cars and we implore each Chapter member to make an effort to make this show. We are assured of our own parking area, too. So come on out and make this an enjoyable day for you and your family.

SHOWTIME - CONTINUED

Craig Stewart can be contacted for additional information. Bill Wright from New York advised us that the Rhineback Show in New York will also provide spots for our Chapter, along with their local Cadillac Club. This show is early May.

SPRING THAW

On Sunday April 10, 1994 the Allentown, Pa. Spring Thaw Fire Flea Market will once again be held at the Fairgrounds. For any members wishing to attend, there will be a brief get-together at 11 A.M. at the rear snack bar.

ACTIVITIES

In May or June, as soon as we can firm up a Saturday evening the Chapter is planning to hold a dinner at a North Jersey restaurant, where Harold Clark has graciously consented to give us a talk on his days as North Jersey's Miller-Meteor representative. Sounds like a good nostalgia trip. We'll keep you posted on progress.

On Saturday April 16, 1994 we are formulating a field trip to a North Hersey livery service. A photo session is being planned as well. Details to follow.

WELCOME NEW MEMBERS

Robert E. Behr
436 North Main Street
Sellersville, Pa. 18960
49 Flxible Buick Ambulance

Ted Collins
159 George Avenue
Wilkes-Barre, Pa. 18705
92 S & S Cadillac Victoria Hearse

Bill & Lucille Marcy
349 Lookout Avenue
Hackensack, N.J. 07601
76 Cadillac Fleetwood Limousine
78 Cadillac Fleetwood 75 Sedan

Richard Spahr
835 Dreer Lane
Rosemont, Pa. 19010
74 Superior Cadillac Ambulance

NEW MEMBERS - CONTINUED

Earl C. Zimmerman, Jr.
6805 Jackson Street
Philadelphia, Pa. 19135-2211
75 M-M Cadillac Hearse

Herbert H. Gellings
501 Cotluss Road
Riverdale, N.J. 07457-1215
51 Siebert Ford Ambulance

PARTS WANTED:



Any help appreciated. Mike Santuz 700 Beaver Street, Bristol, Pa. 19007-3822 (215) 788-8125 or (215) 788-1211

Richard Frank
833 Press Lane
Boscort, Pa. 19010
74 Superior Cadillac ambulance

FOR SALE:

1966 Black Pontiac Hearse Combination (body by Superior Coach)
108,000 miles; recently repainted; in premium shape.
Asking \$5,000. Contact Rick at (908) 287-9523.

PARTS WANTED:

1966 Superior Cadillac Ambulance Gray Rubber Front Floor Mat,
that was used in place of carpet #8776093 NOS or VG used.

1973 Cadillac deVille rubber filler strips below headlights
#1602052-LH, #1602053-RH NOS or excellent used.

1974 Superior Cadillac Flower Car - rear bumper sections that
have the tail lights in them. 74, 75, 76 will interchange.
Bumper sections same as hearse or ambulance.

Die-Cast Quarter panel script for 1966 Cadillac Ambulance or
Hearse also needed.



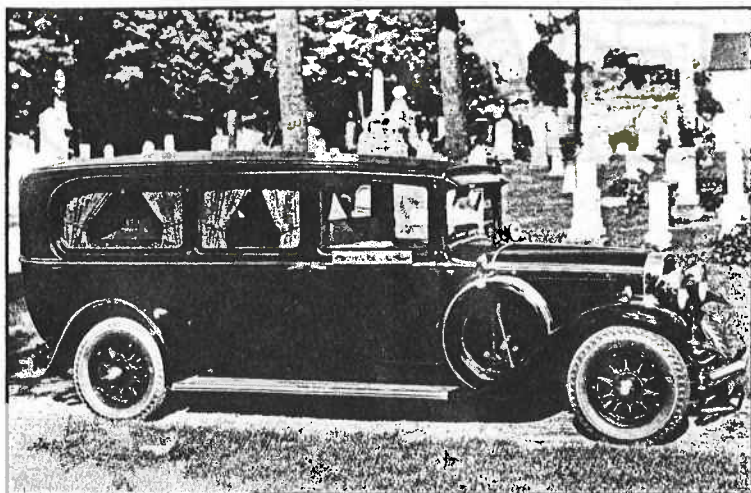
Any help appreciated. Mike Barruzza 700 Beaver Street, Bristol,
Pa. 19007-3823 (215) 788-8105 or Fax (215) 788-1931.



CALENDAR OF EVENTS

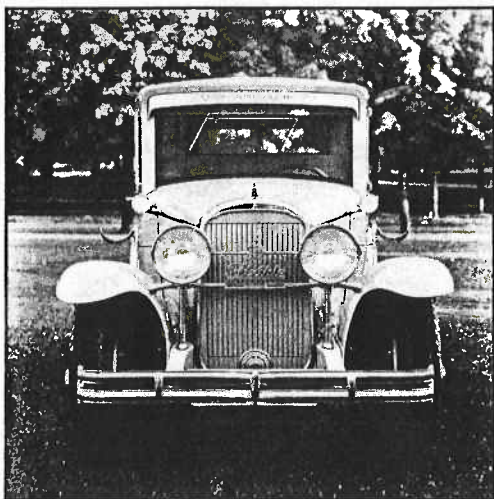
- APRIL - 10th Spring Thaw - Allentown, Pa.
15th - 17th Englishtown, N.J. Show and Swap Meet
16th Northeast Chapter Livery Tour and photo shoot
Call Craig Stewart for more information
- May - 7th - 8th Rhineback Car Show and Swap Meet
15th Bristol, Pa. Mill Street Auto Show
215-788-3131 for more information
21st Wallington, N.J. 100th Anniversary
Parade - Call Craig Stewart for more information
- June - 5th Nutley N.J. Spring 94 Msgr. Owens Park Auto
Show and Swap Meet (Club Event)
25th Sayrevill, N.J. Antique Fire Apparatus Muster
and Flea Market. 908-463-7445 for more information
- July - 21st - 23rd North American Flower Car Owners Association
Meet - Miamisburg, Ohio
29th - 31st Summer Carlisle - Carlisle, Pa.
- Aug. - 6th - 8th Macungie, Pa. Auto Show and Flea Market
10th - 13th PCS International Meet, Pittsburg, Pa.
13th - 14th New Hope Auto Show - PCS Class Saturday
27th Laurel Lions Club Car Show, Laurel Race Course
Maryland - Mid Atlantic Chapter Event
- Sept. - 23rd - 25th Englishtown, N.J. Auto Show and Swap Meet
- Oct. - 8 Staatsbury, N.Y. - Red Hook Car Club Show
Professional Car Class

Introducing the most interesting professional car book of the decade.....



Look What It Includes

- Compiled by T.A. McPherson, author of "American Funeral Cars and Ambulances Since 1900" and a recognized professional car expert.
- Foreword by Walter M.P. McCall, respected automotive author and editor of "The Professional Car".
- The only book ever published on The Flxible Company and their products.
- Contains over 900 rare factory, beauty, detail, interior, styling, production, exterior and close-up photos of all 1925 to 1965 models.
- Complete verified production figures along with chassis cross reference and some prices and weights are presented.
- Crisp, beautiful factory photographs, many never before seen, show Buicks, Cadillacs, Chevrolets, LaSalles, Packards and Buses set out in chronological order.
- Promoting The Product chapter features reproduced Flxible advertisements.
- Limited press run of 1500 Books, the first 150 copies are numbered and autographed. A true collectors piece.
- Large 9 x 11 format bound in a dark blue cover with gold stamping.
- The complete, detailed Flxible history presented. Funeral car and ambulance developments covered in minute detail. Flxible motor cycle side car and bus history also traced in words and photographs.



Flxible

PROFESSIONAL VEHICLES

THE COMPLETE HISTORY

by

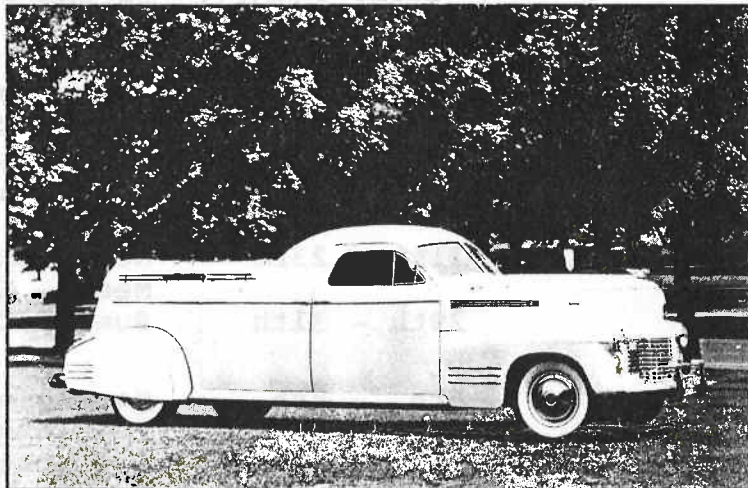
THOMAS A. McPHERSON



Approx.
300
pages

OVER
900
FACTORY
PHOTOS

Limited
Edition



SVP

RETAIL PRICE \$57.45

ORDER NOW AND RECEIVE 20% OFF!

Your Price \$45.95 ea.

SPECIALTY VEHICLE PRESS

• 49-6A THE DON WAY WEST • SUITE 1916, DON MILLS • ONTARIO • CANADA • M3C 2E8

YES, SEND _____ COPIES OF *Flxible* PROFESSIONAL VEHICLES: THE COMPLETE HISTORY.

MY CHECK OR MONEY ORDER FOR \$ _____ IS ENCLOSED.

NAME: _____

ADDRESS: _____

CITY: _____ STATE/PROV.: _____

POSTAL CODE: _____

SORRY ; CANADIAN RESIDENT MUST ADD 7% GST
ONTARIO RESIDENTS MUST ALSO ADD 8% PST

SVP



The Professional Car Society, Inc.

Northeast Chapter

President

Criterion Editor

Michael A. Barozza
700 Beaver Street
Bristol, PA 19007
(215) 788-8105
(215) 788-1931 (Fax)

Vice President

Fred Goerlitz
2 Brantwood Terrace
Hackettstown, NJ 07840
(908) 852-1743

Secretary

Mary Hookway
201 Glenside Trail
Sparta, NJ 07871
(201) 729-8083

Treasurer

Membership Chairman

Leo M. Maren III
369 Chestnut Street
Surling, NJ 07980
(908) 647-3738

Activities Director

Craig Stewart
273 Hillcrest Ave
Wood-Ridge, NJ 07075
(201) 438-1757

The Northeast Chapter of the Professional Car Society operates under a charter granted by the Society's Board on August 19, 1986. The Chapter serves PCS members in New Jersey, New York, and Pennsylvania. Subscription to this newsletter is by membership in the Chapter through the Membership Director listed above. Membership in the Professional Car Society, Incorporated, is a prerequisite to membership in any of its chapters.

The Professional Car Society, Inc.

Northeast Chapter



MEET OURS FIRST
700 BEAVER STREET
BRISTOL, PA 19007
(215) 382-1323

Year President
J. Linnwood Turner
Hockelstown, NJ 07840
(908) 533-1412

President
Christian Kottor
700 Beaver Street
Bristol, PA 19007
(215) 382-1323

Treasurer
Membership Chairman
Leo H. Hagan III
388 Chestnut Street
Philadelphia, PA 19106
(215) 627-7288

Secretary
Mary Hookway
391 Riverside Drive
Philadelphia, PA 19106
(215) 627-7288

Associate Director
Lyle Stewart
273 Hillcrest Ave
Wood-Ridge, NJ 07075
(201) 488-1751

The Professional Car Society
Northeast Chapter
c/o 700 Beaver St.
Bristol, PA 19007-3823

FIRST CLASS

The Northeast Chapter of the Professional Car Society operates under a charter granted by the Society's Board on August 19, 1988. The Chapter serves POC members in New Jersey, New York, and Pennsylvania. Subscription to this newsletter is by correspondence to the Chapter through the Membership Director listed above. Membership in the Professional Car Society, Incorporated, is a prerequisite to membership in any of its chapters.

MEMBERSHIP LIST

MEMBERSHIP LIST