

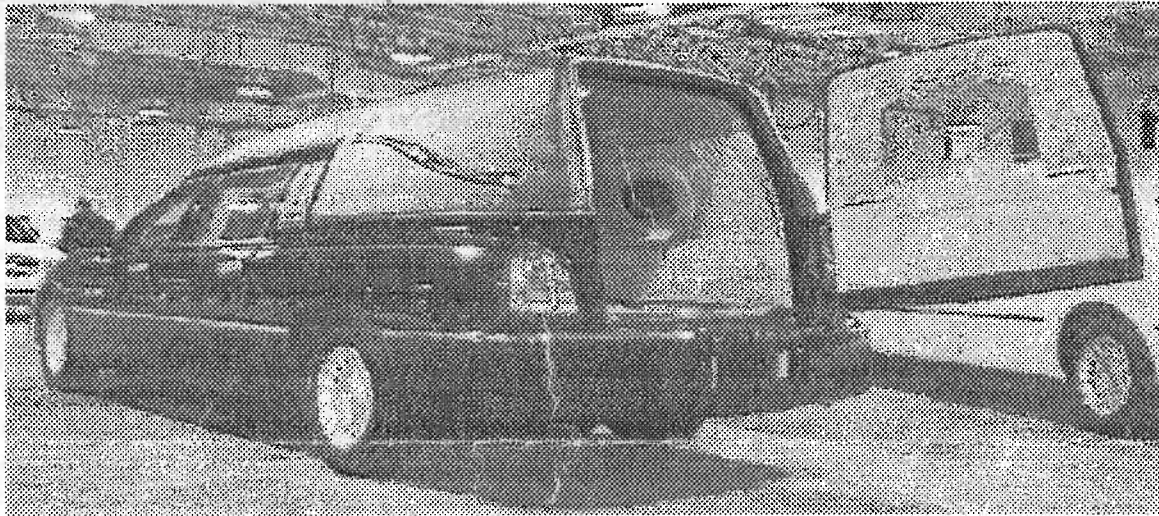


The Criterion

NEWSLETTER OF THE NORTHEAST CHAPTER OF THE PROFESSIONAL CAR SOCIETY
FIRST QUARTER | 1998

GREGG D. MERKSAMER, EDITOR

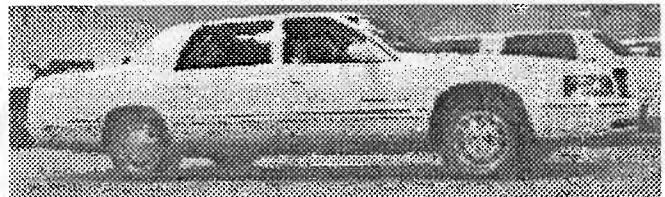
LIMO BUILDERS SHOW THEIR LATEST CARS IN ATLANTIC CITY & SECAUCUS



This past February area professional car fans in our region had the opportunity to take in not one but two industry exhibitions, the Limousine Digest Show at the Trump Taj Mahal in Atlantic City and the Limousine Industry Manufacturers Organization product expo at the Meadowlands Exposition Center in Secaucus. The biggest draw was no doubt Lincoln's all-new 1998 Town Car, which boasts a trimmer-looking exterior and much-improved steering, handling and braking while retaining its traditionally rugged rear-drive separate chassis-frame. S&S/Superior of Lima, Ohio built the Town Car funeral coach displayed by Lincoln-Mercury (*above*), though their badges were omitted to make the vehicle a more generic example of the QVM coachbuilder's art. To maximize casket compartment space, S&S/Superior cut and widened the rear section by 4 1/2 inches between the taillights; company Marketing Manager Mike McKiernan also told me that, unlike the forward-sloping side windows used on the prototype, production Lincoln hearses will employ backward-sloping windows similar to those on

S&S/Superior's Cadillac coaches.

Having changed over to front-drive propulsion and unit body construction on its funeral coach and limo platforms last year, Cadillac isn't lying down in response to Lincoln's latest challenges. GM's luxury car division has authorized S&S/Superior to use the Fleetwood Limited moniker for its new "double cut" DeVille conversion (*below*), which features special 1-piece all-metal quarter panels that add six inches behind the rear doors and another six inches to the rear quarter panels for added rear seat legroom and trunk room. Priced at \$49,995 suggested retail, the Fleetwood Limited should be available from select Cadillac dealers by the time you read this.



NEWS IN BRIEF...

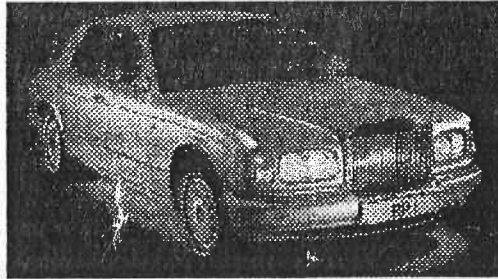
Northeast Chapter to Meet June 7th: The upcoming PCS International Meet in Chicago (and what it can teach us about hosting the 1999 PCS International in Lancaster, PA) will be the top topic at the next Northeast Chapter meeting, which starts at 12:30 pm on Sunday, June 7th at the Long Hill First Aid Squad HQ in Stirling, NJ. Call Leo Maren at (908) 647-3738 for directions.

"Egg" Brunch Proves Excellent: Even as snow fell across our northern domains the Northeast Chapter's spring bunch drew 29 people to the Renault Winery in Egg Harbor, NJ on March 22nd. Professional cars on hand included Rich Litton's 1965 Superior Pontiac ambulance, Barry Caselli's 1974 M-M Criterion Cadillac "walk-through" ambulance and a 1964 Ford fire chief's wagon brought by Jon and Stan Ponulak. For most of us it was also the first time we got to see Jon & Tammy Ponulak's new baby Jacob George, who was born not long after we toured Wilner's Livery in Edison, NJ last July.

Return To Egg Harbor: Chapter Vice President & Activities Director Bill Marcy has announced that old Cadillacs and various vintage professional cars are being sought for a 1-4pm open house at the Atwood-Peterson-Guthlein Funeral Home in Egg Harbor, NJ on Sunday, May 31st. The home is located at 1114 White Horse Pike, and more detailed directions are available from Bill O'Brien at (609) 494-8496.

www.geocities.com/MotorCity/Garage/1074: This is the internet address for the new Northeast Chapter web site recently set up by our laptop-saavy president Leo Maren. The site features an activities calendar, photographs of various member-owned procars and a click-on music icon that plays TheartistformerlyknownasPrince's "1999" (to publicize our hosting next year's PCS International in Lancaster) as you surf the site.

DISPATCHES FROM THE FOREIGN OFFICE



Last month's Geneva auto show witnessed the world debut of the Rolls-Royce Silver Seraph (*above*), the company's first all-new sedan in eighteen years. Priced at only \$216,400 and named for "an angel of the highest order," the new Rolls uses a 322 hp V-12 engine supplied by BMW (makes sense since the Munich automaker stands poised to purchase the company from Vickers) and the only carryover components from the outgoing Silver Spur are the exterior door handles and the interior's chrome-plated eyeball vents and "organ stop" airflow knobs. With its passenger and trunk compartments set somewhat narrower than the fenders, the Silver Seraph's basic styling theme recalls the 1955-65 Silver Cloud. A Bentley version, called the Arnage and powered by a twin-turbo BMW V-8 rated at 350 hp, is slated to debut at the LeMans race course in France April 26th.

Fred Kanter, whose front-end rebuild kits and other restoration products keep our collector cars in tip-top shape, sent in the photo of a hatchback hearse built from a 1977 or 1978 Chrysler New Yorker 4-door hardtop (*below*) that he found on the street in Brussels, Belgium. Taking a magnifying glass to the oval badge over the rear door release reveals the coachbuilder to be "FUNTRESSY" or something like that - perhaps one of our readers can tell me for sure.

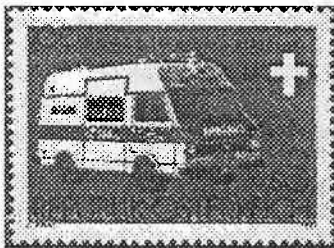


GREETINGS FROM KIAMESHA LAKE

Though I'm always glad to get them I don't receive too many "Letters to the Editor," so I'll use this space to express thanks for the first one sent to *The Criterion* from the **Myron Gittell**, who lives in the Northern reaches of the Northeast Chapter in Kiamesha Lake, NY. This past March he sent down two interesting letters where he passed along some information on ambulances he had collected in recent years. This was much appreciated since I come from the limousine and funeral coach side of things and will be the first to admit that ambulance-related articles could appear more often in these pages.

Suggesting places where people like myself might plump up our knowledge of the EMS profession, Myron informed me there's a National EMS/Rescue Museum at the Tanglewood Mall in Roanoke, Virginia (located at the junction of US 220 and 419; call 540-776-0364 for more info). Said to be the first museum tracing the history of EMS in the U.S., its interactive displays allow visitors of all age to "play the dispatcher" and report an actual car accident, "ride to the rescue" in a real crash truck and examine equipment used to train EMTs and paramedics.

Myron also sent a history of ambulances on stamps that he'd clipped from the August 26, 1996 issue of *Linn's Stamp News*; early horsedrawn ambulances, their designs refined by lessons learned in the Crimean and U.S. Civil Wars, appeared on stamps printed in the Turks and Caicos Islands in 1970, Guernsey and Jersey in 1977, the U.S. in 1985 and Great Britain in 1987. Depicting a Volkswagen van ambulance, an Austrian stamp from 1981 (*above left*) celebrates the centennial of Vienna's emergency medical service. Airborne ambulances seem a popular postal topic, with a 1960 Romanian stamp depicting a strange looking light plane (*top right*) and a 1972 stamp from Switzerland showing a helicopter. A stamp issued in Paraguay in 1964 even predicted the future of ambulance service,



with a Space Shuttle-like vehicle shown streaking through the stars (*bottom right*) to mark the 100th Anniversary of the International Red Cross.

Myron's letter also recommended a 50 minute videotape entitled "Making a difference: The History of Modern EMS," which chronicles the profession's development using archival TV news clips, vintage photos and interviews with the pioneers of EMS to (Item # CJ30904, it's available for \$39.95 from the Mosby Year Book/Jems Bookstore, 11830 Westline Industrial Drive, St. Louis, Missouri 63146 or by phoning 1-800-240-0703; buy five or more and the price drops to \$15.95).

Not ignoring the funeral side of PCS, Gittell also wrote me about a trolley car specifically used for hauling the casket and entourage in Los Angeles in the early 1900s (shown in the book "Trolley Cars," by Frank Sullivan and Fred Winkowski, published by Motorbooks International in Osceola, Wisconsin). If these subjects interest any of *The Criterion's* readers further they might want to write Myron at **Post Office Box 175, Kiamesha Lake, NY 12751.**



CRITERION CLASSIFIEDS:

1940 Henney-Packard Series 1801 Hearse/Ambulance. Restoration started, body sandblasted and primed. Covered dual sidemounts, 3-way entry. \$3,000. Joe Napoli, (201) 251-9746.

1950 Chrysler Crown Imperial Limousine. Complete and running but needs restoration. \$3000. Sal Anicito, (201) 440-5337 days.

1967 Miller-Meteor Cadillac Embassy Flower Car, one of six built during 1967 model year. 50,000 miles, Inverness Green with black crinkle-finish roof. Trophy winner at several PCS International Meets and the 1995 Cadillac-LaSalle Grand National. \$15,995. Carlton Ham, (603)934-4913 or e-mail whtmtman@together.net.

1967 Miller-Meteor Cadillac End-loading Funeral Coach. Grey exterior with black vinyl top, original mileage in mid 60's, runs sweet but needs cosmetics. \$2,000 obo. John Barruzza, (215) 785-4695 anytime.

1977 Superior Cadillac Funeral Coach. Russet red exterior, black interior and Landau-style top. 66,000 miles. Tape deck. Newly inspected and excellent running condition. Needs body repair on passenger side after being sideswiped by a deer. Asking only \$900. Brian Stahl, (412) 563-4779 or E-mail hogid@ix.netcom.com.

1978 Miller-Meteor Cadillac limousine-style hearse. 1st place prize winner at 1997 PCS International in Baltimore. Grey exterior with black top, 34,000 original miles, ice-cold a/c, new tires & exhaust. \$5,800. Also selling **1980 Cadillac Metropolitan Standard Wheelbase Flower Car Conversion.** Features tonneau cover, 70,000 original miles. \$3,500 obo. Trades considered. Bill Marcy, (201) 342-4871.

WANTED: Pre-1916 Brass Era procar or police car. Any type considered if it is brass trimmed. Information and photos please. Sam Jaffe, 32 Woodcrest Drive, Scotia, NY 12302 or (518) 399-5910.

WANTED: 1959-74 Cadillac Ambulance. Mike Murphy, (301) 577-7923 or E-mail murphy_m@bls.gov.

WANTED: NOS or excellent 1974 Cadillac DeVille/Fleetwood grille and round hi-lo power beam headlights, Repair/Service Manual for 1970s Superior Flower Car deck. Mike Barruzza, (215) 788-8105.

CRITERION CALENDAR:

April 26th (Sun.), Parsippany, NJ (Rain date: May 3rd): Professional car class to be featured at 2nd Annual Spring Fling Car show at United Parcel Service, 799 Jefferson Road off I-287. \$10 entry fee benefits The United Way. For more info: Bill Marcy, (201) 342-4871.

May 1-3 (Fri.-Sun.), Hershey, PA: AACA Museum Expo.

May 3rd (Sun.), Bethlehem, PA: Procars needed for mortuary science department display at Northampton County Community College open house. To volunteer: Nick Elias, (610) 740-0990.

May 31st (Sun.), Egg Harbor, NJ: Open house at the Atwood-Peterson-Guthlein Funeral Home, 1114 White Horse Pike, 1-4pm. For directions call Bill O'Brien at (609) 494-8496.

June 7th (Sun.), Stirling, NJ: PCS Northeast Chapter meeting, 12:30 pm at the Long Hill First Aid Squad HQ. For directions call Leo Maren at (908) 647-3738.

June 7th (Sun.), Philadelphia, PA: German-American Fire Muster, Car Show & Dalmatian Show at German-American Club Ground. Info: Karl Blank, (215) 332-7538 or write 7763 Cottage Ave., Philadelphia, PA 19136.

June 14th (Sun.), Mt. Airy, MD: PCS Mid-Atlantic Chapter picnic at the Lichtman compound, (301)607-8068.

July 31st-August 2nd (Fri.-Sun.), Macungie, PA: 35th Annual Das Awkscht Fescht car show at Memorial Park. Cadillac-LaSalle Club (up to 1973) displays in Class 9 on Sunday. To pre-register send \$10 check or money order to Das Awkscht Fescht, Box 127, Macungie, PA 18062 by July 1st.

August 12-15 (Wed.-Sat.), Chicago, IL: 22nd Annual Professional Car Society Intl. Meet at Best Western-Burr Ridge on US 66/I-55. Info: Gene Dybinski, (773) 778-8463 or write 8041 Fawn Trail, Justice, Illinois 60458.

August 8-9 (Sat-Sun) New Hope, Pa.: 42nd Annual New Hope Automobile Show. Pro Car Class on Saturday. Info: 215-862-5665 or call Mike Barruzza at 215-788-8105.

THE PROFESSIONAL CAR SOCIETY

"Dedicated to the restoration and preservation of vintage ambulances, funeral cars & livery vehicles"

NORTHEAST CHAPTER

CHAPTER PRESIDENT:

Leo M. Maren III
369 Chestnut Street
Stirling, NJ 07980

(908) 647-3738
caddy@bellatlantic.net

SECRETARY:

Mary M. Hookway
201 Glenside Trail
Sparta, NJ 07871

(973) 729-8083

VICE-PRESIDENT & ACTIVITIES DIRECTOR:

Bill Marcy
349 Lookout Avenue
Hackensack, NJ 07601

(201) 342-4871

CHAPTER TREASURER & MEMBERSHIP DIRECTOR:

Dottie Forvour
27 Mary Lane
Levittown, PA 19057

(215) 945-9317

CRITERION EDITOR & NATIONAL PCS PUBLICITY:

Gregg D. Merksamer
29 Old Oak Road
Warwick, NY 10990

(914) 986-6857
merks62@warwick.net

CRITERION PUBLISHER & PCS PRESIDENT EMERITUS:

Michael A. Barruzza
700 Beaver Street
Bristol, PA 19007

(215) 788-8105
Fax: (215) 788-1931

Servicing Professional Car Society members in New Jersey, New York and Pennsylvania, the Northeast Chapter of the PCS operates under a charter granted by the Society's Board of Directors on August 19th, 1986. Subscription to this publication is by membership in the Chapter through the Membership Director listed above. **Membership in the national organization of the PCS is a prerequisite to membership in any of its regional chapters.** Details on joining can be obtained from National Secretary Beverly Ruff at P.O. Box 9636, Columbus, Ohio 43209 or by accessing the official PCS home page at <http://www.professionalcar.org>.

97471-1227 11

97471-1227 11

JEFF & MARY HOOKWAY
210 GLENSIDE TRAIL
SPARTA, NJ 07871

FIRST CLASS MAIL



THE PROFESSIONAL CAR SOCIETY
Northeast Chapter
700 Beaver Street
Bristol, Pennsylvania 19007-3823

The Criterion

NEWSLETTER OF THE NORTHEAST CHAPTER
OF THE PROFESSIONAL CAR SOCIETY



Chapter Secretary Mary Hookway sent this newspaper clipping of a rarely-seen Eagle-bodied Fleetwood flower car on the Atlantic City Boardwalk, where it was being used for the funeral of street musician Celestine Tate Harrington. The physically challenged performer became a local institution by using her tongue to play an electric keyboard outside Park Place Casino Hotel. - photo by B. Vartan Boyajian, the Associated Press