

The Criterion

NORTHEAST CHAPTER-PROFESSIONAL CAR SOCIETY

Issue No. 15

Summer, 1990

PROPOSED REVISIONS PASS MUSTER. . . .

Despite a rather poor turn-out for the Spring membership meeting, by mandate of those members present, the post of Secretary is now an office unto itself. The addition of Activities Director was also unanimously approved at this June 24 meeting.

With Executive Board concurrence, MARY HOOKWAY of Sparta, NJ was appointed to the Secretary's post until the Fall elections in October. However, there were no takers just yet of the new Activities Director. It is hoped that this will be corrected in October.

Those present were: MIKE BARUZZA, FRED GOERLITZ, JEFF and MARY HOOKWAY, LEO MAREN, and CRAIG and ROSEANNE STEWART. Mike's nephew, John, was also in attendance as a guest. The meeting was called to order at 1:45 in the meeting room of the Sparta, NJ First Aid Squad. It was suggested that "The Criterion" be offered for subscription to those non-members at a rate of \$5.00 per year, in keeping with several of the other PCS Chapters. This will be forwarded to THE PROFESSIONAL CAR editor Walt McCall in order to advise all; it is hoped that this may increase the Chapter's treasury somewhat.

Under Membership report, LEO MAREN updated some of the member's vehicles: BILL O'BRIEN deleted his 1965 S&S hearse while PAUL PADGETT added two 1982 Cadillacs: a Fleetwood limousine and an S&S Victoria hearse. MYRON GITELL placed a 3rd car to his growing ambulance fleet, a 1971 Cotner-Bevington Oldsmobile 48" Cotington from New Hanover, PA. We were saddened to learn of JOHN BAUER'S move from NJ to Florida and we wish him the best.

Plans were discussed in reference to the PCS International in Atlanta. Leo and Craig reported on various fares for both train and airplane travel. And of course there are always those die-hards who will be braving it along the highways.

A major task at hand is how to instill a greater membership response to Chapter meetings. The Board has and will continue to hold meetings in geographical locales, with both New York and Pennsylvania planned for 1991 events. Your suggestions are earnestly solicited in order for all to benefit from this organization.

The meeting was adjourned at 2:40pm, where members were given a tour of the first aid building, as well as a look at Mike's 1973 S&S, which was the only pro car in attendance. Next meeting is scheduled for SUNDAY, OCTOBER 28, 1:30pm in Passaic Twp, NJ. Directions and details will follow in the fall.

MARKETPLACE

FOR SALE: 1976 S&S Cadillac Professional ambulance; white over aqua; runs ok; needs some work; CONTACT Leo Maren, 201-647-3738. (NJ)

FOR SALE: circa 1890 wicker casket; made by Frigid Fluid Co, Chicago; prime, like-new condition; plus wooden stand to place it on; \$975.00

circa 1890 lamps (2), 4 ft tall, cast aluminum, w/ candles on top; these were placed alongside casket; \$125.00

circa 1880 horse drawn hearse carriage lamps; large & fancy, silvered and ornate; pair; \$1475.00

1950 Henney Packard flower car; original black paint, excellent running condition; no rust; wide whites; cloisonne wheel covers; needs nothing; have owner's/repair manuals, plus sales literature; \$12,000.

1960 Superior Coupe de Fleur Cadillac flower car; original white paint, excellent running condition; no rust; 36K miles have manuls and sales literature; must see this one to appreciate; \$17,700.

1964 Superior Coupe de Fleur flower car, Cadillac; original, complete; minor rust, excellent running condition; \$3,600.

1965 Superior Coupe de Fleur Cadillac flower car; partially converted into pick-up, w/ tonneau cover, Cragar wheels, large tires, radio; excellent driver; \$2400.

CONTACT: George B. Ruth, 17 Darling Dr, Reading, PA 19609; phone 215-678-4301

WELCOME NEW MEMBERS

Michael Barruzza
261 Madison St
Bristol, PA 19007-4222
215-785-2607
1973 S&S Cadillac Victoria hearse

George Theodoracopulos
Box 571
Forest Hills, NY 11375
1971 M-M Cadillac Olympian hearse

PLEASE NOTE ! ! !

Our Fall meeting will be held on Sunday, October 28, 1990 at 1:30pm
at Twp of Passaic First Aid Squad building, Stirling, NJ

Directions to follow!!

IMPORTANT! Nominations from the floor will be held for election of 1991
Chapter Officers.

Please make every effort to attend

Northeast Chapter

THE PROFESSIONAL CAR SOCIETY, INC.

PRESIDENT
CRITERION EDITOR

Craig Stewart
273 Hillcrest Avenue
Wood-Ridge, NJ 07075
(201) 438-1757

VICE-PRESIDENT

Philip Jast
1108½ 17th Avenue
Wall, NJ 07719
(201) 280-1499

SECRETARY

Mary Hookway
201 Glenside Trail
Sparta, NJ 07871
(201) 729-8083

TREASURER
MEMBERSHIP CHAIRMAN

Leo M. Maren
350 Morris Street
Stirling, NJ 07980
(201) 647-3738

ACTIVITIES DIRECTOR

The Northeast Chapter of the Professional Car Society operates under a charter granted by the Society's Board on August 19, 1986. The Chapter serves PCS members in New Jersey, New York, and Pennsylvania. Subscription to this newsletter is by membership in the Chapter through the Membership Director listed above. Membership in the Professional Car Society, Incorporated, is a prerequisite to membership in any of its chapters.

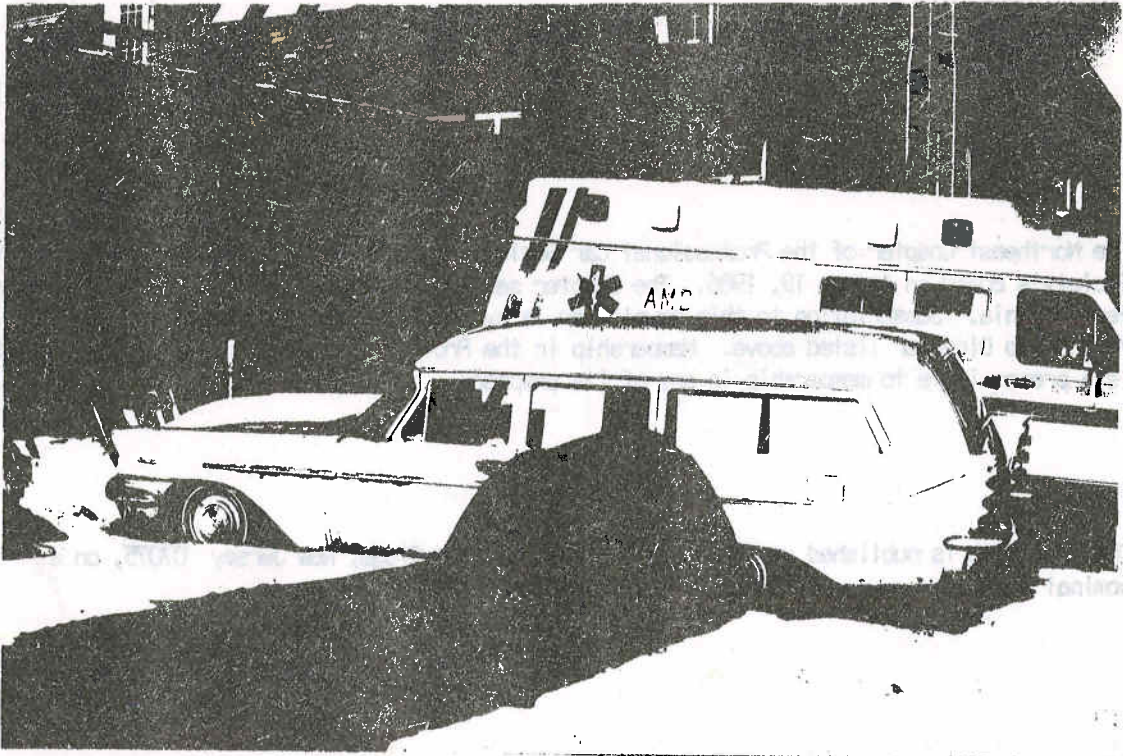
The Criterion is published at 273 Hillcrest Avenue, Wood-Ridge, New Jersey 07075, on a nominal schedule.

Jeffrey & Mary Hookway
201 Bionside Trail
Sparta, NJ 07871

FIRST CLASS MAIL



NORTHEAST CHAPTER
PROFESSIONAL CAR SOCIETY
273 Hillcrest Avenue
Wood-Ridge, NJ 07075



SNOWBOUND! What better way to keep cool this summer by reflecting back on those harsh winters. Pictured is Minnesota PCS member John Ringdahl's 1957 Memphisian DeSoto combo... Car is finished in light green, and contrasts well against the hardly-visible snow.