



The Criterion

NEWSLETTER OF THE NORTHEAST CHAPTER OF THE PROFESSIONAL CAR SOCIETY
THIRD QUARTER 1999 GREGG D. MERKSAMER, EDITOR

PCS LANCASTER '99: THE FINAL COUNTDOWN

Top activities for making the most of "on your own" time



While the Professional Car Society's 1999 International Meet in Lancaster, PA will offer plenty of activities, we hope attendees will reserve some quiet time for the area's abundant pastoral splendors.

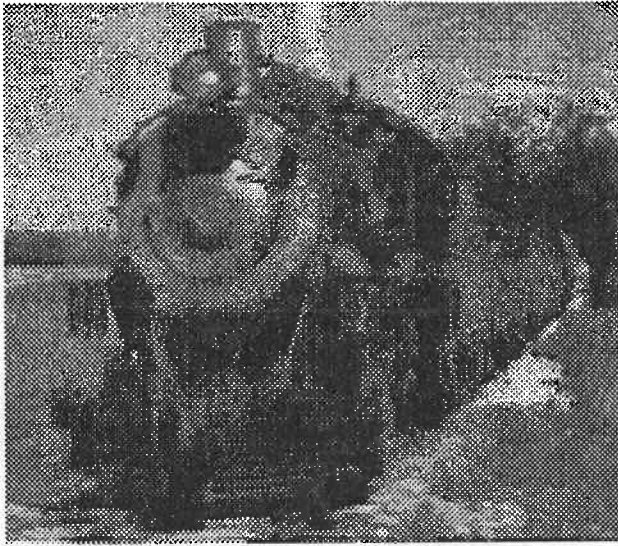
While Your Editor is looking forward to the Professional Car Society's 23rd Annual International Meet in Lancaster, PA this August 18th-21st, my reasons for doing so are a little different than they are for other PCS members who will be coming from all over the U.S.A. and Canada - and it's not just because my 1984 Cadillac Limousine is in no condition to

reliably make the four-hour trip from Warwick, NY! For me it will be more of a homecoming to an area that I visited on an almost weekly basis and developed great affection for during my college years in the early 1980s. While every other student at Lehigh University in Bethlehem (about 70 miles northeast of Lancaster) focused on fraternity pub nights or, occasionally, their studies, I explored every corner of the Dutch country in my dark blue 1981 Pontiac Bonneville, filling my dorm room refrigerator with local cheeses from the Green Dragon farmer's market in Ephrata or Peanut Butter Meltaways from the Wilbur Chocolate Co. in Lititz. While it didn't do my waistline any favors I remained a frequent visitor after graduating Lehigh in 1984, and seriously considered a permanent move to the area if the right career opportunity came along. Irrespective of season I still managed a visit every month or two until 1989, when I quit my job as a clerk on the New

IN THIS ISSUE:

Full PCS Lancaster '99 Timetable!

A meet flyer you can copy and pass out
at your favorite shows!



Departing Strasburg at 11am on Friday, an old time steam train ride to Paradise will be one of the highlights of the formal itinerary.

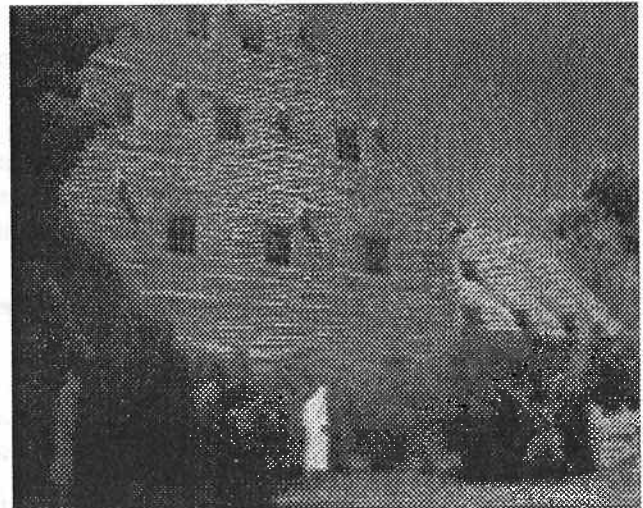
York Stock Exchange to study graduate transportation design at the Pratt Institute in Brooklyn. This was where I designed some 21st Century Henney-Packard hearses for my thesis project and that is how I ended up in the PCS.

Now that you know Your Editor's life story, let's rewind a little and see what it offers Lancaster-bound PCS people in the way of "on your own" activities that spotlight the most memorable and unique aspects of America's oldest inland city. To get you started I'm passing on some of my personal recommendations for easily-found destinations that, while they couldn't accommodate large groups or large numbers of professional cars and were therefore unsuited for the formal meet itinerary, will give you a good idea of what makes this region so special:

The Ephrata Cloister, comprising 12 restored buildings at the junction of US 322 and PA 272 in Ephrata (phone 717-733-6600), provides a fascinating glimpse into the semi-monastic lifestyle of the Seventh Day Baptists that settled the town in 1732. Peaking at about 300 members before dissolving in 1875, the order established by the Reverend John Conrad Bissel frowned upon, but did not prohibit, marriage and private ownership of property - their highly self-sufficient complex included its own paper mill, saw

mill and flour mill - and the cells of individual members were so austere that the beds were nothing more than wooden benches with wooden pillows. Nevertheless, the Cloister became famous for high-quality printing and calligraphy after obtaining a printing press around 1742, and was used as a hospital after the Battle of Brandywine in 1777.

Heading southwest out of Ephrata on Rothsville Road, I strongly recommend you pick up PA 772 westbound and head to **Lititz**, where the 200 year old **Sturgis Pretzel Bakery** at 219 East Main Street (open 9am-5pm Mon.-Sat.; 717-626-4354) stands ready to accommodate your fall football game nutritional requirements. After visiting Sturgis head into the center of Lititz and make a right turn onto PA 501 north (also accessed directly from Route 30 if you're coming from Lancaster) and follow your nose to the **Wilbur Chocolate Candy Americana Museum & Store** (open 10am-5pm Mon.-Sat.; 717-626-3249). I grew plump n' happy on this company's ultrasmooth milk chocolate Peanut Butter Meltaways and hard chocolate Wilbur Buds, which have proved durable enough over the years to be mailed to a friend and fellow Wilbur fanatic from Arizona. If you're a serious chocoholic your only salvation is to back up to the Wilbur loading dock and stock up on ten-pound ingots of Guernsey or Cashmere-grade Chocolate Coating at around \$20 each.



The 18th Century Ephrata Cloister is high on Your Editor's list of recommended historic sites for a self-guided tour of Lancaster County.

PCS LANCASTER '99 - THE OFFICIAL ITINERARY

Duplicated in the registration packets available from Andy & Karen Toton at the address listed in the "Criterion Calendar" on Page 6, here's a timetable of the myriad activities that PCS people can look forward to in Lancaster this August. PCS Northeast Chapter president Leo Maren (reached at 908-647-3738 or by E-mailing caddy@bellatlantic.net) adds that extra volunteers are needed to man the registration desk or marshal cars around the parking lot during show day, and reminds registrants that the special room rate can only be obtained by calling the Best Western Eden Inn Resort directly at (717) 569-6444.

WEDNESDAY, AUGUST 18th:

9 am-noon, 1-5 pm: PCS registration desk open in Embassy Room at the Best Western Eden Inn.
9:15 am: Busses depart hotel for tour of Harley Davidson motorcycle plant in York, return to hotel by 4pm.
CAMERAS, OPEN-TOED SHOES AND CHILDREN UNDER 12 ARE PROHIBITED ON PLANT TOUR, BUT ARE ALLOWED AT THE MUSEUM. Lunch at a nearby restaurant, then tour Quigley Motor Company factory in Manchester where ambulances are converted to right-hand or 4-wheel drive.
7 pm: "Philly Fest" Welcome Party in hotel atrium with soft pretzels, peanut chews and Tastykakes.

THURSDAY, AUGUST 19th:

8:30 am-noon, 1-5 pm: PCS registration desk open in hotel's Embassy Room.
9 am: Busses depart hotel for Hershey tours "A" and "B," which return to hotel by 4 pm.
Tour "A" features a free tour of Hershey's Chocolate World, followed by visit to HersheyPark or Zoo America Wildlife Park. Tour "B" includes Chocolate World, a Chocolate Town guided tour, Founder's Hall, the Hershey Museum and the Antique Automobile Club of America's Library.
5 pm: Using self-drive map provided in registration packet, meet at the Hershey Farm Restaurant on PA 896 in Lancaster for Pennsylvania Dutch family style dinner. Gardens, gift shop and general store on site.

FRIDAY, AUGUST 20th:

8:30 am-noon, 1-5 pm: PCS registration desk open in hotel's Embassy Room.
9 am: Doors open to the Railroad Museum of Pennsylvania on PA 741 in Strasburg, about a 15-20 minute self-drive from the hotel.
10:30 am: Gather at Strasburg RR across street from RR Museum for 11 am train to Paradise, returning to Strasburg 45 minutes later. Tour other Lancaster-area attractions on your own. Dinner on your own.
3 pm: PCS Governing Board Meeting in hotel's Executive Suite.
8 pm: PCS General membership meeting in hotel's Regency II Room.

SATURDAY, AUGUST 21st:

8 am: Display area on west side of hotel reserved for the cleaning and placement of show vehicles.
8:30 am-noon: PCS registration desk open in hotel's Embassy Room.
10 am-3 pm: Shuttle to Rockvale Square Outlets and Tanger Outlet Center operates from front of hotel.
6 pm: Start of cocktail hour for PCS awards banquet, Grand Ball Room.
7 pm: Start of awards banquet, which is followed by Light and Sound Show in parking area.

SUNDAY, AUGUST 22nd: Good-bye and farewell. Safe trip home. See you at the Professional Car Society's 2000 International Meet in Kingston, Ontario, Canada from August 16th-19th.

If you're watching your weight or prefer not to spend your tourist dollars on melting commodities, your best bets in Lancaster County are the 400-plus indoor dealers at the Renningers Antique Market on PA 272 in Adamstown (open 7:30 am-5pm Sundays, this is one of the few regional shopping spots that's open on Sunday), the Bird-in-Hand Iron Works on PA 340 between Bird-in-Hand and Intercourse (your one-stop shop for weathervanes and doorstops; 717-768-8101) and Eldreth Pottery on PA 896 in Strasburg (246 North Decatur Street, 717-687-8445), which hand-produces traditional Pennsylvania Redware and Salt-Glazed Stoneware. If you've ever wondered what it must be like to stand in the shadow of a fifteen foot tall talking Amish figure, **Zinn's Restaurant and Recreational Park** (near Renninger's at the junction of PA 272 and Pennsylvania Turnpike Exit 21 in Denver) offers just such an opportunity as well as "32 acres of family fun" including batting cages and a pair of twin 19 hole golf courses.

As you drive around Lancaster County you may notice a number of cars where the chrome trim and wheel covers have been camouflaged with black paint. These "Black Bumpers" are owned by Mennonites, who endorse adult baptism and refuse to bear arms like the Amish but are more willing to accept technology into their households and pursue higher education. Like most other religions Anabaptism encompasses a number of conservative and liberal sects that are externally expressed by their varying tolerances to buttons, curtains, carpets, electricity, automobiles and individualistic dress. With its free movies and exhibits (which include a full-sized Hebrew Tabernacle reproduced from Biblical descriptions) the **Mennonite Information Center** at 2209 Millstream Road in Lancaster (Mon.-Sat., 8am-5pm; 717-299-0954) is an invaluable resource for understanding these distinctions; among other services the Center can provide individual car owners with Mennonite guides who can take them to Amish cottage industries or other related attractions off the tour bus-beaten path. Another excellent source of education on Amish lifestyles and culture is the **Landis Valley Museum** some two and a half miles north of Lancaster on PA 272 (717-569-0401), which stages demonstrations of traditional crafts on a daily basis. If something a bit less pastoral is your preference, there's always the

DID YOU KNOW?

As America's oldest inland city, Lancaster had high hopes about becoming the country's U.S. capital after Independence and it got its wish for a grand total of one day - September 27th, 1777, when the Continental Congress stopped over after fleeing Philadelphia in the aftermath of the Battle of Brandywine. In addition to boasting some of America's most fertile farmland, the Conestoga Wagon (named for creek that runs through the region) and the long-barreled Kentucky rifle that tamed the West were invented and manufactured in Lancaster County.

Military Edged Weaponry Museum at 3562 Old Philadelphia Pike in Intercourse (717-768-7185). If historic mansions are your cup of tea, head to President James Buchanan's Wheatland at 1120 Marietta Avenue in Lancaster (717-392-8721) and check out the Federal-style digs of the only bachelor and the only Pennsylvanian to occupy the White House.

Quite a few once-a-year events will be taking place in or around Lancaster County at the same time that the PCS is meeting there. One of the most interesting is the demonstration of vintage steam engines and agricultural machinery at the annual **Rough & Tumble Thresherman's Reunion** (717-442-4249) that takes place in Kinzers (about ten miles east of Lancaster on U.S. 30) from August 18th-21st. August 20th is also the opening day for the **19th Annual Pennsylvania Renaissance Faire** at the Mount Hope Estate & Winery National Historic Site on Route 72 in Cornwall (717-665-7021). If you enjoyed Sean Connery and Richard Harris in "The Molly Maguires" as much as I did, head north via Interstate 81 or PA 61 into the Blue Mountains for the August 21st **Pioneer Day** at the **Pioneer Tunnel Coal Mine** (570-875-3850) at 19th & Oak Streets in Ashland. This region of Pennsylvania features the world's largest deposits of high-carbon, clean-burning Anthracite coal, which you can see for yourself by taking a battery-pulled open mine car 1,800 feet into the side of Mahanoy Mountain or, if

you'd prefer to stay above ground, a 30-minute narrow gauge steam train ride to a spot where an old strip mine left a 150-foot tall wall of solid rock extending as far westward as the eye can see. Back in Ashland you can buy jewelry made from anthracite coal in the gift shop or check out the monumental bronze replica of Whistler's famous painting that was erected in 1938 as a memorial to the mothers of Ashland.

PUT NEW HOPE ON YOUR PROCAR CALENDAR!

Noreasters in need of a "dress rehearsal" for PCS Lancaster '99 are well advised to attend the 43rd annual antique auto show at New Hope, PA the weekend before. Sponsored by the New Hope-Solebury Community Association at the junction of PA Route 179 and U.S. Highway 202, this massive meet attracts nearly one thousand vintage vehicles in two days and is one of the few shows in the region with a dedicated professional car class. "Saturday, August 14th is our day to display," advises PCS Northeast Chapter President Leo Maren, "and I'm hoping that we'll top last year's attendance record of eleven vehicles in class PC." No alcohol or tobacco is allowed as the event is conducted on school property, and show cars must arrive before 11am to be eligible for judging. While day-of-show registration costs \$25, anyone who pre-registers before August 12th can cut that fee to just \$10. For further information write the New Hope Automobile Show at P.O. Box 62, New Hope, PA 18938 or phone Roger H. Conduit at (215) 862-5665. Registration info can also be obtained by faxing (215) 862-3821, E-mailing newhopeautoshow@hotmail.com or logging onto www.newhopeautoshow.org.

FIGHTING THE GOOD FIGHT

Anyone who reads the old car press with any regularity cannot help but be concerned about the continuing assaults on our hobby by state and Federal legislators who make a handful of vintage vehicles scapegoats for air quality problems to petroleum companies and other large polluters that initiate "crusher" programs that give them *carte blanche* to keep pumping their own wastes into the environment. "As a result of pending clunker legislation, I am deeply

concerned about the future our hobby and it seems a good idea to stay informed," says Northeast Chapter V.P. Bill Marcy. His most recent action in response has been to register the Northeast Chapter of the PCS in the SEMA Action Network, which uses a subsidy from the Specialty Equipment Manufacturers Association to publish a monthly newsletter keeping tabs on proposed anti-hobby legislation as well as the activities of various car clubs.

"While volunteers like Ben Deutschman and Butch DeZuzio's Classic Vehicle Advocate Group have done a great job," Marcy adds, "the S.A.N. has the time, money, clout and organization that can make a real difference in this ongoing battle. Everyone who loves their car, their club and their hobby should consider membership." It costs nothing for an individual to join the S.A.N., which can be contacted by phoning (202) 783-6007 or writing:

SEMA Action Network
Brian Caudill, Editor & Director
1317 F Street NW, Suite 550
Washington, D.C. 20004

THE LATE JOE EARLY

Bobby Troup (*below right*), best-remembered in our sphere of influence for playing Rampart Hospital's Dr. Joe Early on the TV series *Emergency!* (still seen on cable's TV Land at 3pm and midnight weekdays), died of congestive heart failure on February 7th at the age of 80. What you might not know about him is that he had also authored such classic jazz standards as "Route 66," "Baby, Baby All The Time" and "Meaning of the Blues," and got his role on the PCS' favorite rerun by being married to producer Jack Webb's ex-wife Julie London, who herself played Nurse Dixie McCall on the popular TV show.



CRITERION CLASSIFIEDS:

1956 National Chevrolet long wheelbase ambulance. Rare, mint original with 23,000 miles, 265 V-8, 3-speed column shift. \$15,000. Charles Havelka, LaGrange, IL, (708) 246-8116.

1963 Flxible Buick long-wheelbase hearse. Rare and restorable! Parts car included. Price reduced to \$850 for the pair. Stan or Jon, Main St. Motors, Somerville, NJ, (908) 231-1144.

1964 Cadillac Series 75 Limousine: Regularly exercised 72,000 mile example needing cosmetic restoration. New shock absorbers and five balanced radial tires installed last year. Price includes a spare 429 engine and Hydramatic transmission. \$2000 OBO. Dan Reed, (610) 593-7430.

1967 Miller-Meteor Cadillac Embassy Flower Car, one of six built during 1967 model year. 50,000 miles, Inverness Green with black crinkle-finish roof. Trophy winner at several PCS International Meets and the 1995 Cadillac-LaSalle Grand National. \$15,995. Carlton Ham, (603)934-4913 or e-mail whtmtman@together.net.

1969 Superior Cadillac Flower Car. One of 24 made, complete project car, runs good. \$2300 OBO. John Giacomantonio or Chuck Six, (732) 286-6753.

1972 Cadillac Fleetwood Limousine: Silver with black top and blue interior. Garage-kept, only 50,000 miles. Gorgeous! \$7000 OBO. Eve Schmidt, (717) 732-2750.

1973 Cadillac Fleetwood Formal Limousine. Black with matching crinkle finish top. \$2995 OBO. Dave Wilner, (732) 549-5500.

Parting out 1973 Cadillac Fleetwood 9-passenger sedan. Tom Completo, (914) 782-5159 (leave message).

25-year ambulance and funeral car literature collection: 53 pieces covering 1941-78 model years and such coachbuilders as Henney, S&S, Miller-Meteor and Superior. Many prestige catalogs! Will pay shipping. \$1,750 for the lot. George B. Ruth, (610) 678-4394.

WANTED: Any make 1956-76 high-top ambulance wanted for business promo, light camping. Robert Giaquinto, Dr. T-Shirt, 1716 Hwy 71, Spring Lake Heights, NJ 07762. Phone (732) 449-9227 or fax 449-0804.

WANTED: 1955, 1958, 1960, 1962 or 1964 Cadillac limousine with air conditioning, a divider and a good frame and interior. Prefer a dark blue or grey exterior. John Lawlor, (508) 378-3023.

WANTED: Front end parts and side script for 1963 S&S Cadillac Park Row Combination Coach & Repair/Service Manual for 1970s Superior Flower Car deck. Mike Barruzza, (215) 788-8105.

CRITERION CALENDAR:

August 6th-8th (Fri.-Sun.), Macungie, PA: Das Awkscht Fescht. Phone (610) 262-9718 for further info.

August 14th (Sat.), New Hope, PA: Professional Car Class "PC" at 43rd Annual New Hope Auto Show. \$10 pre-registration until August 12th, or \$25 day of show. Phone (215) 862-5665 to request further information.

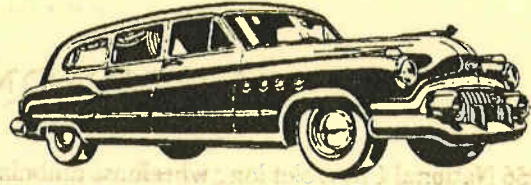
August 15th (Sun.), Millville, NJ: Wheaton Village Fire Apparatus Show & Muster. Phone John Buraichelli at (609) 423-8910 for further information.

August 18th-21st (Wed.-Sat.), Lancaster, PA: PCS Northeast Chapter hosts the Professional Car Society's 23rd Annual International Meet at the Best Western Eden Inn Resort, U.S. 30 at PA 272. **Registration packets** are available from Andy & Karen Toton at 765 Livezey Street, Philadelphia, PA 19128 or by e-mailing ATOLK@aol.com. **Special rate hotel reservations** can only be secured by calling the Best Western Eden Inn Resort directly at (717) 569-6444.

Sept. 12th (Sun.), New Berlinville, PA: Ambulance Class at Tri-County Fire Muster. Phone (610) 367-7857 for further information.

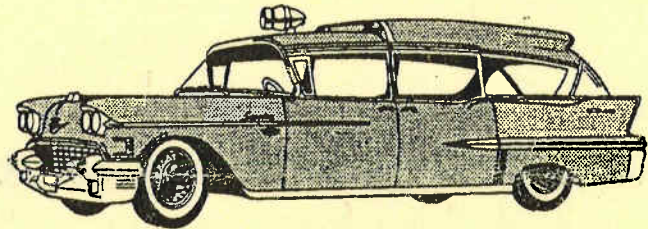
Sept. 19th (Sun.), Ridgewood, NJ (raindate Oct. 3rd): Cadillac Club of North Jersey's 8th Annual Show at Brogan Cadillac. Phone/fax Dick Bankart at (201) 263-0999 to request further information.

PROFESSIONAL CAR SOCIETY



23RD ANNUAL INTERNATIONAL MEET

Welcoming All Vintage:
Funeral Cars - Ambulances
Limousines - Livery Vehicles



WED. - SAT., AUGUST 18TH - 21ST, 1999

BEST WESTERN EDEN INN RESORT - U.S. ROUTE 30 AT PA 272

LANCASTER, PENNSYLVANIA

To keep people focused on the style and workmanship of these virtually custom-built vehicles, PCS judging rules prohibit the display of caskets, skeletons and other macabre miscellany in any car admitted to the show field.

For further information contact:

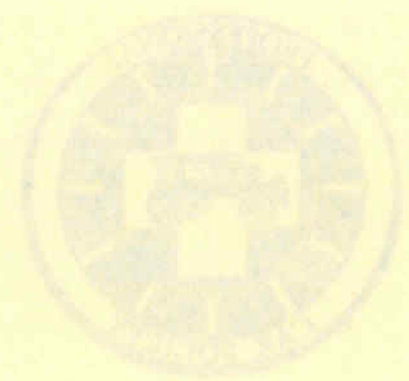
Leo Maren, Northeast Chapter President
(908) 647-3738
or E-mail caddy@bellatlantic.net



PROFESSIONAL

CALL SOCIETY CHAPTER

3RD ANNUAL INTERNATIONAL MEET



W/cocking All Things
Personal Cars - Automobiles
Lunches - Dinner - Parties

WED - SAT - AUGUST 16TH - 21ST, 1999

BEST WESTERN ECKHART RESORT - U.S. ROUTE 30 W PA 275

LANCASTER, PENNSYLVANIA

For further information contact:

For more information contact:

The American Society of Professional Calligraphers is a non-profit organization dedicated to the promotion and advancement of the art of calligraphy. The Society is a national organization of individuals who are interested in the art of calligraphy and who wish to share their knowledge and skills with others. The Society is a national organization of individuals who are interested in the art of calligraphy and who wish to share their knowledge and skills with others. The Society is a national organization of individuals who are interested in the art of calligraphy and who wish to share their knowledge and skills with others.

THE PROFESSIONAL CAR SOCIETY

"Dedicated to the restoration and preservation of vintage ambulances, funeral cars & livery vehicles"

NORTHEAST CHAPTER

www.geocities.com/MotorCity/Garage/1074

CHAPTER PRESIDENT:

Leo M. Maren III
369 Chestnut Street
Stirling, NJ 07980

(908) 647-3738
caddy@bellatlantic.net

SECRETARY:

Mary M. Hookway
201 Glenside Trail
Sparta, NJ 07871

(973) 729-8083
mhookway@njems.com

VICE-PRESIDENT & ACTIVITIES DIRECTOR:

Bill Marcy
349 Lookout Avenue
Hackensack, NJ 07601

(201) 342-4871

CHAPTER TREASURER & MEMBERSHIP DIRECTOR:

Dottie Forvour
261 Madison Street
Bristol, PA 19007

(215) 788-5688
Silvspn@aol.com

CRITERION EDITOR & NATIONAL PCS PUBLICITY:

Gregg D. Merksamer
29 Old Oak Road
Warwick, NY 10990

(914) 986-6857
merks62@warwick.net

CRITERION PUBLISHER & PCS PRESIDENT EMERITUS:

Michael A. Barruzza
700 Beaver Street
Bristol, PA 19007

(215) 788-8105
Fax: (215) 788-1931

Servicing Professional Car Society members in New Jersey, New York and Pennsylvania, the Northeast Chapter of the PCS operates under a charter granted by the Society's Board of Directors on August 19th, 1986. Subscription to this publication is by membership in the Chapter through the Membership Director listed above. **Membership in the national organization of the PCS is a prerequisite to membership in any of its regional chapters.** Details on joining can be obtained from National Secretary Beverly Ruff at P.O. Box 9636, Columbus, Ohio 43209 or by accessing the official PCS home page at <http://www.professionalcar.org>.

07A71X1249 11

THE PROFESSIONAL CAR SOCIETY

JEFF & MARY HOOKWAY
201 GLENSIDE TRAIL
SPARTA, NJ 07871

FIRST CLASS MAIL PHILA PA 18-14 07/22/99 1SS #22

THE PROFESSIONAL CAR SOCIETY
Northeast Chapter
700 Beaver Street
Bristol, Pennsylvania 19007-3823



The Criterion

NEWSLETTER OF THE NORTHEAST CHAPTER
OF THE PROFESSIONAL CAR SOCIETY

FUNDRAISING DRIVE:

Now 88 years old and still active in the West Milford, NJ Volunteer Fire Department, Herb Moser (wearing hat) posed with colleagues Liz Olson, Cal Aiken and Gene Durski (kneeling) and the company's new 1947 or 1948 Superior Cadillac limousine ambulance. As the base price of this model soared from \$3,170 in 1942 to \$5,375 five years later, it was certainly necessary to hang signs on it that urged the community to "Help Us to Help You."

- North Jersey Sunday Record, April 18th, 1999

