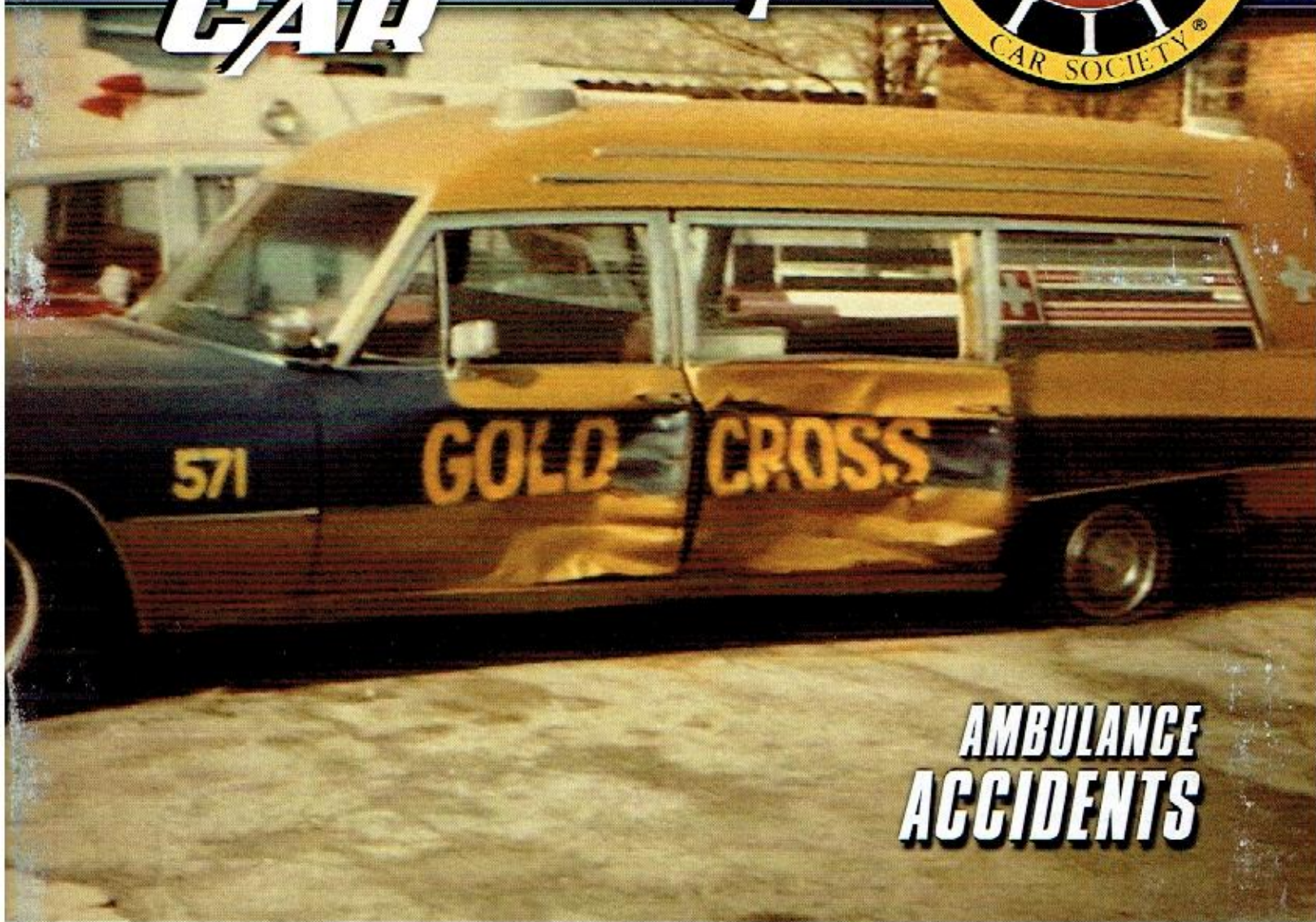
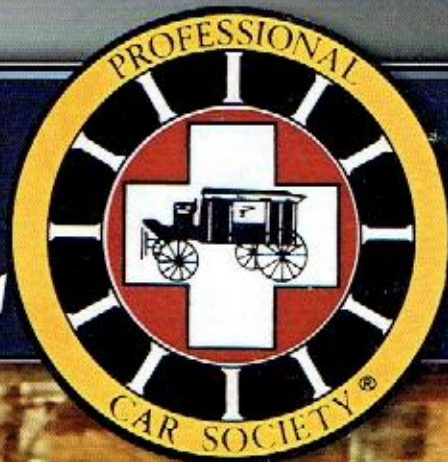


The
PROFESSIONAL
CAR



**AMBULANCE
ACCIDENTS**

NUMBER 208

1st Quarter 2026

The Professional Car

Issue Number 208

First Quarter 2026

IN THIS ISSUE:

- PAGE 2 – A MESSAGE FROM THE PRESIDENT
- PAGE 3 – COMING UP: PROFESSIONAL – CAR EVENTS AROUND THE WORLD
- PAGE 5 – AMBULANCE ACCIDENTS – BY GREGG MERKSAMER
- PAGE 15 – ONE YEAR WONDERS – BY WALT McCALL
- PAGE 24 – THE 2026 PCS INTERNATIONAL MEET
- PAGE 25 – FIFTY YEARS AGO
- PAGE 27 – FAREWELL TO DAN BRINTLINGER
- PAGE 29 – A 1931 HENNEY HEARSE
- PAGE 33 – PCS MARKETPLACE
- PAGE 35 – ANOTHER GOLDEN QUILL AWARD
- PAGE 37 – THE DIETRICH CARS – BY JOE VAN VOLKENBURG
- PAGE 39 – INDIANA CHAPTER ATTENDS SPRING GROVE
- PAGE 42 – A TRIBUTE TO STUART BLOND
- PAGE 44 – BLOTTERS FROM THE STEVE LOFTIN COLLECTION

ON THE FRONT COVER - Buffalo, NY PCS member Joe Van Volkenburg enthusiastically responded to our call for ambulance accident photos by providing, among other images, this post-crash shot of the handsomely two-toned 1968 Miller-Meteor Cadillac "Classic 48" high-top that became Gold Cross Ambulance's first rig when it was founded August 1st, 1973. "Car 571" incurred this driver's side damage at the intersection of Kensington and Bailey Avenues while transporting a patient to Veterans Hospital Buffalo (situated at 3494 Bailey several blocks away from the crash) in the fall of 1976. "Thank God no one was injured in the accident," Joe recalls, which can't be said for several other incidents chronicled in this issue's lead story.

ON THE BACK COVER - Minneapolis General Hospital was the operator of this 1941 Henney Packard Model 14194 ambulance when it struck a phone pole as recalled in this Funerarium Collection photo dated August 21st, 1946. It seems the rubbernecker in this shot is evidently most interested in the 160-horse, 356-cubic-inch nine-bearing "straight eight" found beneath this rig's slightly ajar "butterfly" hood.

CENTERSTRETCH - While we don't know when or why this Palo Alto Ambulance-affiliated 1965 Miller-Meteor Cadillac got wrecked, it's certainly a dramatic shot demonstrating how M-M's all-steel coachwork (claimed to have thirty percent more torsional strength than competing high-tops fitting fiberglass roof caps) could take a beating. This photo originally entered PCS circles via Robert Shepard of Alamo, California and subsequently reached us at high-res through Belvidere, Illinois PCS Life Member Bruce Biancalana, who explained to Your Editor "I have a 1969 Miller-Meteor that was originally a Palo Alto car."

Gregg Merksamer—Editor